

Set up Harmony with iMON and Media Portal

I will try and explain my setup and how I achieved it in case your set up is slightly different.

First I use iMON to receive my IR commands from Harmony H655. I used iMON 7.77 as this is necessary for LCD to work with mini display.

Set iMON to use MCE remote control.

On iMON "Program command" tab, set up new program, click add program and navigate to Mediportal.exe

Register this when prompted.

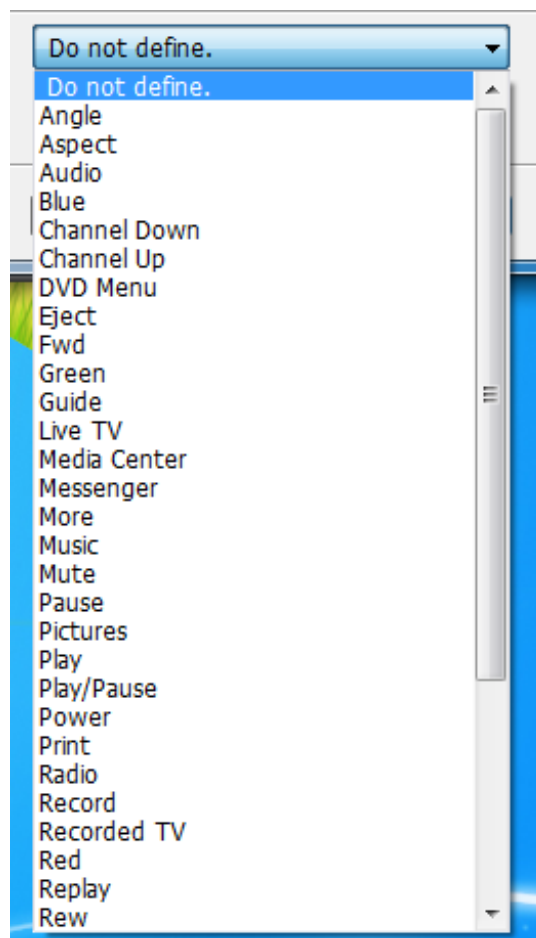
It is possible to import the Mediportal.imo using import, but this is not optimum!

I wanted to find all remote commands that i could map from harmony to iMON, so I set up every available command for RC Button Name in iMON with its name, but no action i.e

Function	Shortcut	RC Button Name	RC Setup
Play	()+()+()	Play	O
Stop	()+()+()	Stop	O
Green	()+()+()	Green	O

(only showing 3, but set up for every iMON RC button name available)

Etc for every RC Button Name

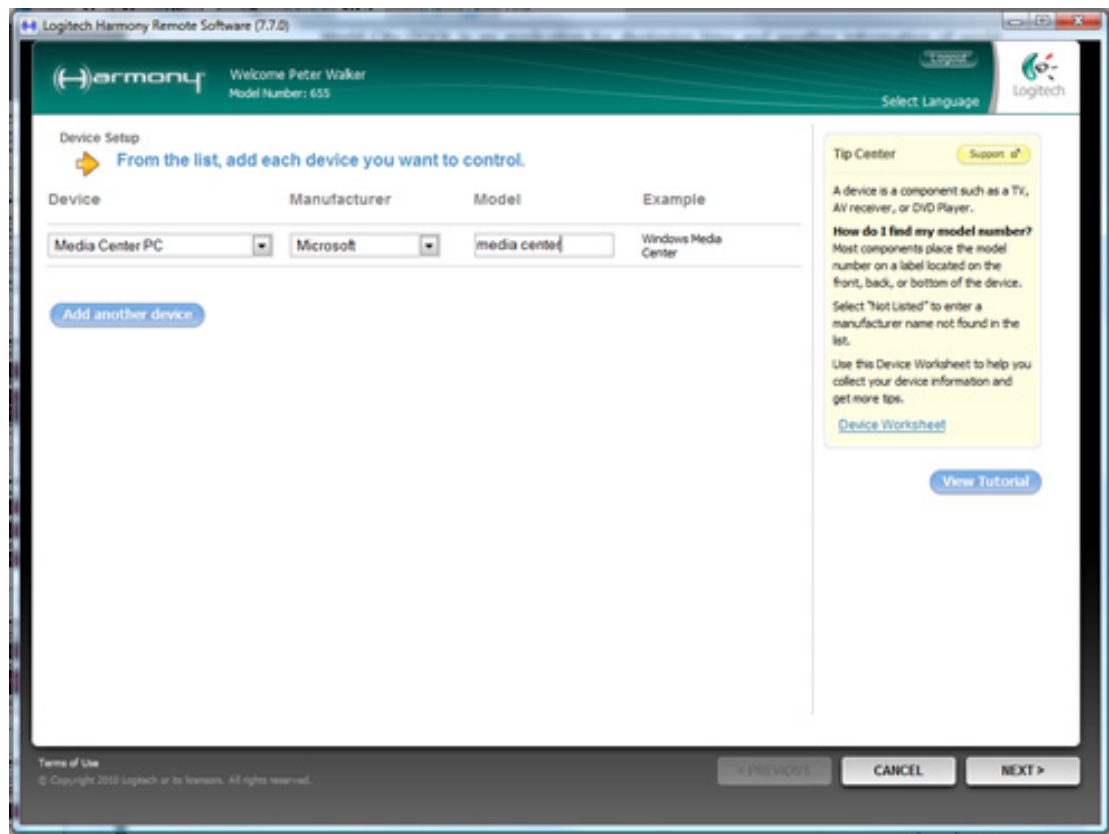


iMON RC Button names

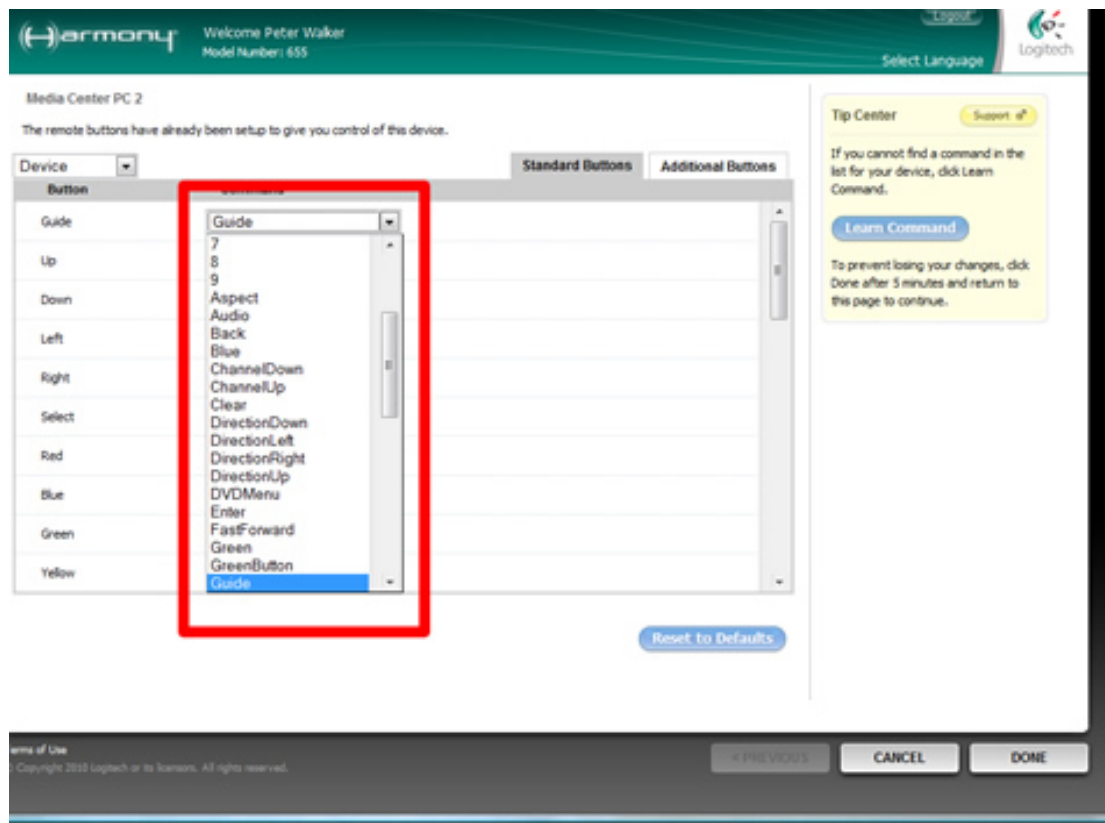
Then save this, and set up the display to always show the blue icon on the screen and makes a sound when it receives an IR it understands.

This is so when the iMON receives an IR command it understands it will display it on the blue button on the screen, and tell you what it has just received. You can then see what commands sent from Harmony are received and understood by iMON.

In Harmony set up, I set up remote for Media center PC using MCE remote control.



and mapped every available function to a standard button, or an additional button, either naming the button with the command, or being sure I knew what command was mapped to what button.



Map every remote command for MCE remote control

“Number buttons”, “arrow buttons”, “Select/OK” and “clear” are already mapped as mouse commands, so do not register on the iMON blue button! (Clear is mapped as [ESC] and Select/OK mapped as [ENTER]).

Now start media portal in windowed mode, and make sure iMON is running and displaying the blue icon on the screen.

By pressing each “standard button” and “Additional button” on the remote you should get an indication of each button name mapping.

Make a note of each command that is received and record the Harmony button and the iMON name.

The number of pairings will tell you how many remote commands can be sent, and what they are.

Now make a list of Media Portal shortcuts, and assign an iMON command to it

iMON Cammand
Volume down
Volume up
Stop
DVD Menu
more
Rew
Fwd
Replay
Skip
Recorded TV
yellow
Subtitle
Mute
play
Channel Up
Channel down
Record
Audio
Pause
Green

Media Portal Shortcut	description
-	Volume down
=	Volume up
A	
Alt+Enter	Fullscreen
Arrow keys	Navigate
B	Stop
D	
Del,0	Delete
End	Last
Enter	Activate
F1	
F11	Screenshot
F3	Info
F5	REW
F6	FFwd
F7	Skip prev
F8	Skip Next
F9	Context menu
Home	Homescreen
L	
M	Mute
Number	Number
O	
P	Play
Page down	Last page
Page Up	Prev page
R	Record
S	
Space	Pause
u,ESC	Parent Direct
X	Maximise
Y	

My list is above (yellow highlights are already assigned).

There are some commands left over, and Media portal has some useful commands missing, so I use “Shortcutter” to create some additional commands as below.

ShortCut'er Plugin

Section	Key	Skin-ID
Home - Basic	b	35
Home	h	0
TV	t	1
TV - Fullscreen	l	602
TV Guide	g	600
Teletext	s	7700
Teletext - Fullscreen	o	7701
Movies	f	6
Movies - Fullscreen	z	2005
Radio	r	30
Music	m	501
Pictures	x	2
Weather	w	2600
TV Series	u	9811
My Films	q	7986
DVD	y	3001

You must enter a section name, then the wished key for that and the skin id.

If there is no key entered then will disabled the section.

You find the common skin ids in the 2 links below.

[See MP Core XML Files IDs](#)

[See Third Party Plugin XML Files IDs](#)

Key modifiers to add:

☒ CTRL

☒ SHIFT

Thanks to chemelli and and-81 :-)

[The ShortCut'er thread is here...](#)

Reset configuration

Update and Close

(note in above screen SHIFT is ticked, but I only use CTRL, so only tick CTRL)

And assign remaining iMON commands to the ones I want

Guide		CTRL+g	TV Guide
Blue		CTRL+b	Home Basic
		CTRL+h	Home
TV		CTRL+t	TV
Live TV		CTRL+l	TV Fullscreen
		CTRL+s	Text
Videotext		CTRL+o	Text fullscreen
		CTRL+f	Movies
Videos		CTRL+z	Movies Fullscreen
Radio		CTRL+r	Radio
Music		CTRL+m	Music
Pictures		CTRL+x	Pictures
Media		CTRL+w	Weather
		CTRL+u	TV Series
red		CTRL+q	My films
		CTRL+y	DVD

Set up iMON under mediaportal program entry to recognise each shortcut as per your chart.

My settings shown below.

iMON

Program : MediaPortal

RC name : MCE remote

Function	Shortcut	RC button name	RC setup
Angle	()+()+()	Angle	0
Aspect	()+()+()	Aspect	0
Zoom	(S)+()+()	Audio	0
Home Basic	(Left Ctrl)+(B)+()	Blue	0
Channel Down	(F7)+()+()	Channel Down	0
Channel Up	(F8)+()+()	Channel Up	0
DVD Menu	(D)+()+()	DVD Menu	0
Eject	()+()+()	Eject	0
Fwd	(F6)+()+()	Fwd	0
Back (Clear)	(Esc)+()+()	Green	0
TV Guide	(Left Ctrl)+(G)+()	Guide	0
Live TV	(Left Ctrl)+(L)+()	Live TV	0
Weather	(Left Ctrl)+(W)+()	Media Center	0
Messenger	()+()+()	Messenger	0
Info	(F3)+()+()	More	0
Music	(Left Ctrl)+(M)+()	Music	0
Mute	(M)+()+()	Mute	0
Pause	(Spacebar)+()+()	Pause	0
Pictutes	(Left Ctrl)+(X)+()	Pictures	0
Play	(P)+()+()	Play	0
Play/Pause	()+()+()	Play/Pause	0
Print	()+()+()	Print	0
Radio	(Left Ctrl)+(R)+()	Radio	0
Record	(R)+()+()	Record	0
Context Menu	(F9)+()+()	Recorded TV	0
Recorded TV	(Left Ctrl)+(Q)+()	Red	0
Skip Back	(PageDown)+()+()	Replay	0
Rew	(F5)+()+()	Rew	0
Skip Fwd	(PageUp)+()+()	Skip	0
Slide Show	()+()+()	Slide Show	0
Stop	(B)+()+()	Stop	0
Subtitle	(L)+()+()	Subtitle	0
TV	(Left Ctrl)+(T)+()	TV	0
Videos	(Left Ctrl)+(Z)+()	Videos	0
Teletext	(Left Ctrl)+(O)+()	Videotext	0
Visualisation	()+()+()	Visualization	0
Volume Down	(-)+()+()	Volume Down	0
Volume UP	(=)+()+()	Volume Up	0
Home Screen	(Left Ctrl)+(H)+()	Yellow	0

Finally in Harmony map the other half of the IR pairs to a suitable harmony button

harmony Welcome Peter Walker Model Number: 655 Select Language Logitech

Media Center PC

The remote buttons have already been setup to give you control of this device.

Device [Dropdown]

Standard Buttons Additional Buttons

Button	Command
Guide	Guide
Up	DirectionUp
Down	DirectionDown
Left	DirectionLeft
Right	DirectionRight
Select	OK
Red	Red
Blue	MyTV
Green	RecordedTV
Yellow	Yellow

Reset to Defaults

Tip Center Support

If you cannot find a command in the list for your device, click Learn Command.

Learn Command

To prevent losing your changes, click Done after 5 minutes and return to this page to continue.

Terms of Use

© Copyright 2002 Logitech or its licensors. All rights reserved.

PREVIOUS CANCEL DONE

Harmony Button	iMON Command
Volume down	Volume down
Volume up	Volume up
Arrow Keys	
Stop	Stop
DVD Menu	DVD Menu
0	
Enter/OK	
Info	more
Rew	Rew
Fwd	Fwd
Skip back	Replay
Skip Next	Skip
Menu (green)	Recorded TV
yellow	yellow
Subtitle	Subtitle
Mute	Mute
Number	

Keyboard	Main
-	Volume down
=	Volume up
A	
Alt+Enter	Fullscreen
Arrow keys	Navigate
B	Stop
D	
Del,0	Delete
End	Last
Enter	Activate
F1	
F11	Screenshot
F3	Info
F5	REW
F6	FFwd
F7	Skip prev
F8	Skip Next
F9	Context menu
Home	Homescreen
L	
M	Mute
Number	Number

		O	
play	play	P	Play
Channel Up	Channel Up	Page down	Last page
Channel down	Channel down	Page Up	Prev page
Record	Record	R	Record
Zoom	Audio	S	
Pause	Pause	Space	Pause
Clear (Back button)	Green	u,ESC	Parent Direct
		X	Maximise
		Y	
Guide	Guide	CTRL+g	TV Guide
Blue	Blue	CTRL+b	Home Basic
		CTRL+h	Home
TV	TV	CTRL+t	TV
Live TV(Enter button)	Live TV	CTRL+l	TV Fullscreen
		CTRL+s	Text
Teletext	Videotext	CTRL+o	Text fullscreen
		CTRL+f	Movies
Videos	Videos	CTRL+z	Movies Fullscreen
Radio	Radio	CTRL+r	Radio
Music	Music	CTRL+m	Music
Pictures	Pictures	CTRL+x	Pictures
Weather	Media	CTRL+w	Weather
		CTRL+u	TV Series
red	red	CTRL+q	My films
		CTRL+y	DVD

Yellow standard button and blue is additional button

For example

I named an additional button in Harmony as weather. When this is pressed it send the “Media Center” command to the Imom, The iMON receives this as “Media” command, which has a short cut assigned as [CTRL] + W, which using Shortcutter brings up the weather menu in media portal.

I configured the ENTER button on the harmony to send the “Live TV” command. iMON reads the “Live TV” input and sends a [CTRL] + L shortcut to Media portal which switches to fullscreen TV window.

I hope the above makes sense, it is quite complicated to explain, but the result is very good.

One mapping that is missing is Harmony POWER TOGGLE, which I mapped to iMON as Power. I use this to make shortcut [CTRL] + B to go to Home Basic screen when power button is presse, as this is needed to make power scheduler work.

Check the mappings when running Mediaportal, and I use the iMON blue display button to confirm I have not made any errors.

It will be likely you will want to make modifications to put Harmony buttons in better position after running a little.

Remember, any buttons not mapped to Mediaportal will be picked up by windows, so ensure you keep all buttons mapped in mediaportal iMON, and do not assign a shortcut, unless you want windows to pick it up

If you can not get iMON to work at all, please check you do not have any other IR receiver softwar on PC, I had problem with Nova T-500 as this has IR receiver built into card, and downloaded drivers which stopped iMON working. I needed to disable Nova IR from system.

As you get iMON working as mouse, I presume iMON is working OK on the system, and it is just mapping problem.

Regards

Peter
G0RSQ

Ps
Just needed to make a change, to get mediaportal to shut down correctly.

Made a MACRO command in iMON for power button, to send command [CTRL + B]B.
This changes Mediaportal to Home Basic screen and shuts down any live TV.
Using Power plugin you set Mediaportal to suspend when on home screen for 5 mins.
Remove mapping for power button from windows configuration in iMON to make this work.