

# TvWishList Version 1.2.0.6

## Description

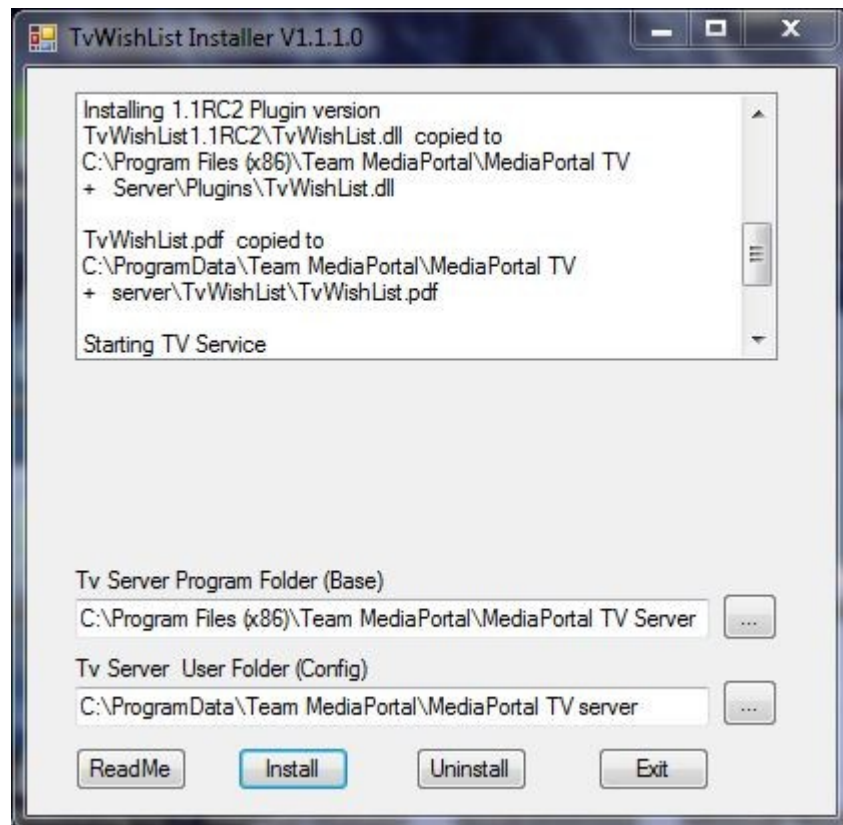
- Never again miss your favourite movie when it is showing up on TV.
- Create a list of movies or episodes you want to record or get a reminder and then stay patient.
- TvWishList will search your Epg data and compare to your search list. If the plugin finds a match it will record and/or send you an email.
- TvWishList will only record one show if it is repeated at multiple times.
- TvWishlist is using the Tv server conflict management
- You can choose partial or exact match for program titles or search the program description.
- Use SQL expressions to search your movies

## Requirements

- TV Server 1.0.1 or 1.0.2 or 1.1.0 or 1.1.1 or 1.2 alfa
- The plugin has been tested with Windows XP SP3, Windows Vista SP2 32bit and Windows 7 64bit.

## Install and Enable the Plugin

- Start the MediaPortal Extension Installer (MPEI) which can be found in your MediaPortal program directory and search for „TvWishList“. Click „Install“ and the TvWishList installer will be started.
- Click next and the TvWishList Installer window will open



- Click the buttons “Readme”, “Install” and “Exit”. Enable the plugin in the TV server configuration.
- During installation or during import you can get a security message for running programs downloaded from the internet twice. You need to confirm to run and uncheck the “ask always” checkbox.
- You can delete all TvWishList files by the Uninstall button.

## Quick Usage Guide

Enter the title of the movie you want to record in the "Search For" textbox and activate the checkbox at the beginning of the line. If you want to receive an Email message you need to fill in the server information on the "Settings" tab. The default settings of the other options can be used for most of the users.

## Detailed Usage Guide

The configuration consists of two tabs „Main“ and „Settings“. In the „Main“ tab you specify your search list which contains the movies and settings you want to apply to your EPG data search. It also contains extended schedule options and specific filter options for episodes or a series.

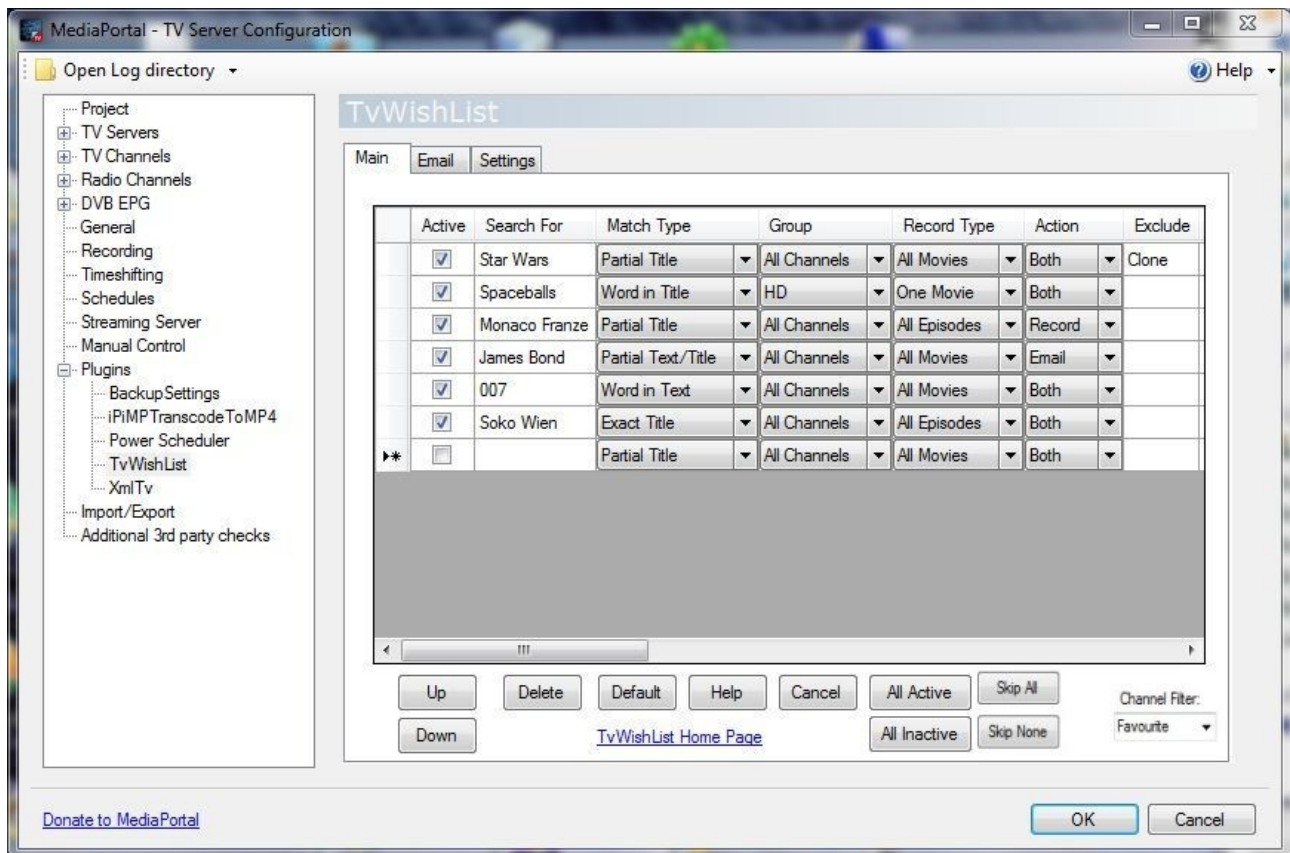
The „Setting“ tab contains the information about your email account if you want to send out an email reminder.

## Main

The „Main“ tab contains a list of all TV shows you want to record or get a reminder if they are found in the EPG data. You can scroll the list by the horizontal scroll bar to see the advanced

settings. To edit an item you have to select it first and then edit the text box or pick the appropriate item from the combo box menu.

The single entries and the buttons are explained in detail:



### *Active*

You can set an actual list entry active or inactive for the next EPG search. In the latter case it will be skipped for the search.

### *Search for*

The program title must be typed into the first text box as it appears in your EPG data. The title is not case sensitive. The search options will be specified in the match type. You can use one single “&&” for defining two conditions as the match criteria of the partial title or text. E.g. “Bond&&007” will search for a title which contains both “Bond” and “007”. The search will be done for the title or description depending on the match type.

### *Match Type*

The match type can be „exact“, „partial“ or “word” if applied to a program title. If „exact“ is selected the program name in the EPG data must be exactly the same as the name specified in the „Search for“ textbox. In case of partial selection the EPG data must contain the specified phrase. Please note that for both options the Search for text is not case sensitive. This option is used only for the program title, but never for the program description, which always implies a „partial“

setting. For “Word in Title”, “Word in text” or “Word in Title/Text” the plugin assumes that a user has specified an exact word as a search criteria. This means the title/text must contain exactly this word with a space before and after the matched text. Alternatively the matched text can be at the beginning or end of the program title or description. If “expression” is chosen for match type the user can specify a SQL query in “Search For”. This enables great flexibility as the following examples are showing:

**Example1:**

(title like '%James Bond%' ) AND ( (description like '%007%') OR (description like '%geheimagent %' ) )

This will match James Bond in the program title only if at the same time either 007 or geheimagent is found in the text description of the program

**Example 2:**

(title like '%Star Wars%' ) AND ( title not like '%clone wars%' )

This will search for a partial title Star wars only if the title does not contain clone wars

**Example 3:**

(starrating ='\*\*\*')

This will search for all programs rated with \*\*\* if your EPG data do include Starrating.

Besides title and description you can also use the following search criteria:

classification, starttime, endtime, originalairdate, episodename, episodenum, episodenummer, episodepart, genre, parentalrating, seriesnum, starrating

Please note that sql expressions are not case sensitive.

The following operators are supported from SQL:

=	Equal
<>	Not equal
>	Greater than
<	Less than
>=	Greater than or equal
<=	Less than or equal
BETWEEN	Between an inclusive range
LIKE	Search for a pattern
NOT LIKE	Search for an excluding pattern
IN	If you know the exact value you want to return for at least one of the columns

The pattern must be enclosed by ' at the begin and at the end of the pattern expression. The following wildcard characters are supported in SQL syntax:

%	A substitute for zero or more characters
_	A substitute for exactly one character
[charlist]	Any single character in charlist
[^charlist] or [!charlist]	Any single character not in charlist

## *Group*

The group name is used to filter specific channels if they are defined in a Tv channel group or in a radio channel group. If you want to record only HDTV channels, you can specify here a group HDTV, which must contain then all your HDTV channels. The EPG data search will only be applied to the defined channels in this group. The default value is to search for all channels. In addition to groups it is also possible to specify a single channel name as explained later.

## *Record Type*

The recording type can be specified if you want to record one single movie or all movies matching to the exact or partial title. If you select One movie the search record will be turned off after the first match. If all movies are checked the record will always stay active and subsequent matches will be processed. If a movie is shown multiple times the plugin will only record the first instance. The program is searching your recordings and existing schedules and will ignore the data if an identical title and an identical description has been found. So this can be used for catching episodes, where identical episodes will be ignored if they have an identical description. Please note that overlapping schedules in time will not be recorded independent of the number of Tv cards you have. if you choose one or all episodes the recording will be flagged as an episode and recorded in a separate folder. Episode management can be applied from the media Portal Recording menu.

## *Action*

Here you can specify for a list item if you want to record the show or send out a reminding email or both if the movie is found in your EPG data. Please note that in addition to each line item the global check boxes must be enabled in your setting tab in addition.

## *Exclude*

Here you can specify excluding filters. The entry Star Wars with the Exclude "Clone" will not record the title "Star Wars: Clone Wars". If the Exclude text is found in the title, the program will not be used. Please note that the Exclude filter will always be applied to the title. If you want to specify an excluding text applied against a description you will need to start with the character \*. The Exclude \*Clone will search in the description of a program for the word clone and ignore the program if found. If you start the Exclude phrase with \*\* before the text, the plugin will search both the title and the description for an excluding phrase. You can specify one OR condition by "||". E.g. the exclude criteria "bond||007" will exclude any title or description (depending on the match criteria) which contains the word bond or 007.

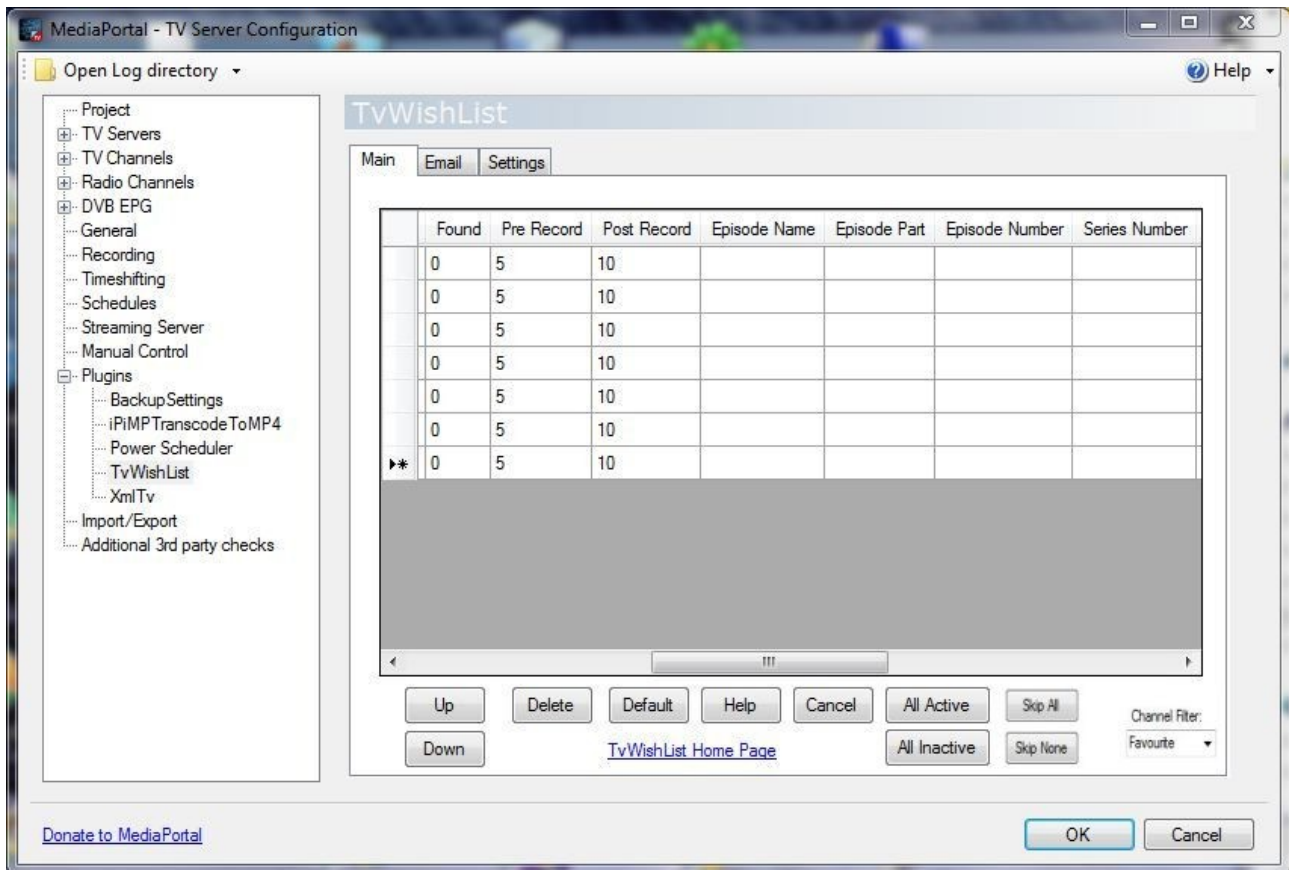
## *Found*

Here you can reset or change the "Found" counter in the list table. Each time the EPG search has found a valid match, the counter will be increased by one and you can see in the list view table how many entries have been found by TvWishList for a search entry.

## *Pre Record*

This will start the recordings x minutes before the EPG start time. The default value is taken from the "Recording" settings.

## Post Record



This will extend the recordings x minutes after the EPG stop time. The default value is taken from the "Recording" settings.

## Episode Name

Here you can filter for a specific Episode Name. It must match the EPG data entry. This option is only valid for MP1.1 or greater. In older versions it will be ignored.

## Episode Part

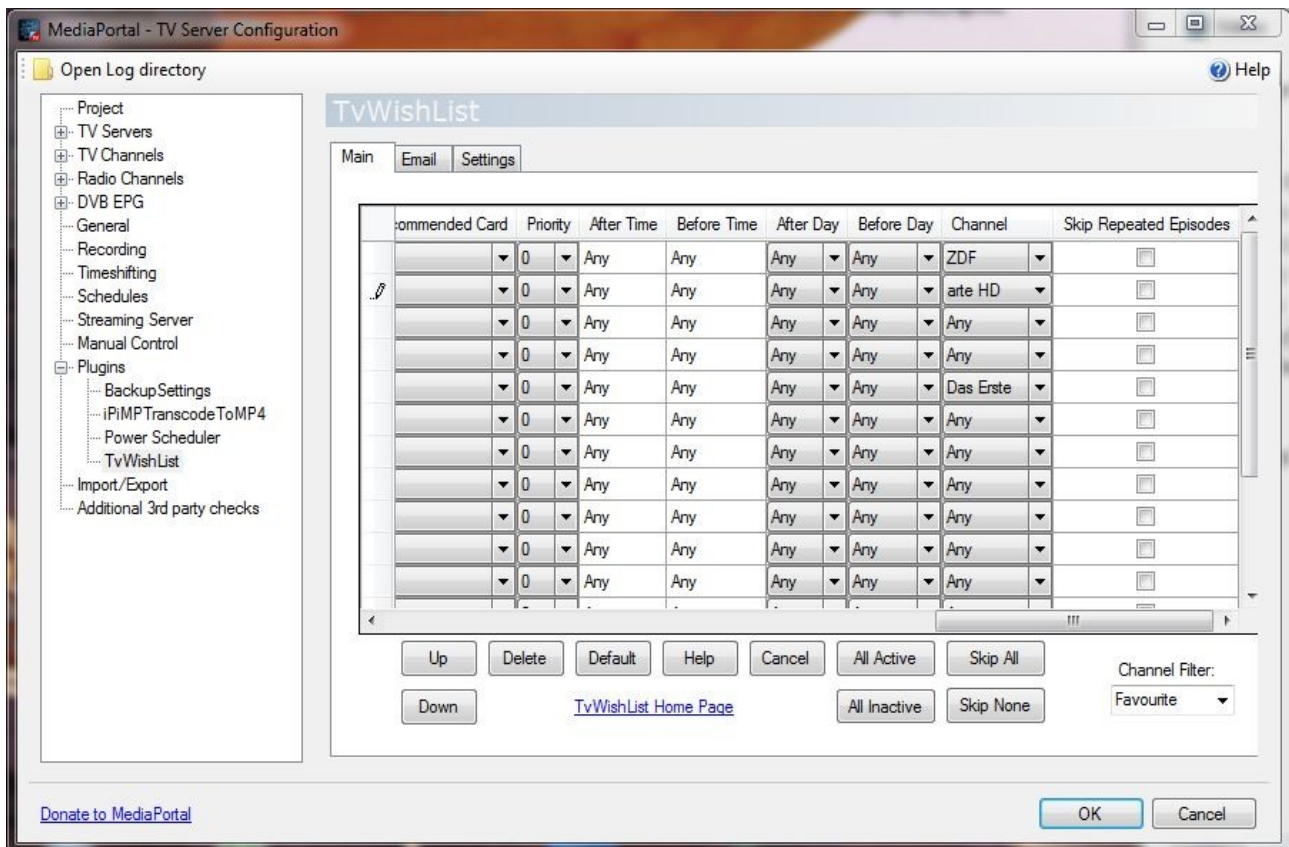
This is a filter option for a complete Episode part. It must match the EPG data entry. This option is only valid for MP1.1 or greater. In older versions it will be ignored.

## Episode Number

This is a filter option for a specific Episode number. It must match the EPG data entry. This option is only valid for MP1.1 or greater. In older versions it will be ignored.

## Series Number

This is a filter option for a specific Series number. It must match the EPG data entry.



### *Keep Episodes*

This is an advanced scheduler option to keep only a maximum number of episodes on your drive. If the number is exceeded by a new recording the oldest episode will be deleted. This can only be used if you choose Episodes in Record Type.

### *Keep Until*

This will specify how long you want to keep the recordings. After this date any found recordings will be deleted from the hard disk. The default entry "Always" corresponds to 31.12.900..

### *Recommended Card*

Here you can define a recommended card number for the recording. The default value is "Any".

### *Priority*

This enables to specify a priority for scheduling. If the option "Schedule Conflicts" is set lower priority schedules in case of a conflict will be deleted. The default value is 0 (low priority).

### *After Time*

Here you can specify a Time interval for recording only after a time in the format hh:mm . If you have specified valid times for after time and before time all matching schedules outside this time interval will be ignored and not recorded/emailed. The time interval refers for each day. If you need more than one time intervals, you can specify the same wish list entry twice with different intervals. Please note that the recorded start time must be after or equal the specified time. The default value is Any.

#### *Before Time*

Here you can specify a Time interval for recording only before a time in the format hh:mm . If you have specified valid times for after time and before time all matching schedules outside this time interval will be ignored and not recorded/emailed. The time interval refers for each day. Please note that the recorded end time must be before or equal the specified time. The default value is Any.

#### *After Day*

Here you can specify a Time interval for recording only after a day . If you have specified valid times for after day and before day all matching schedules outside this interval will be ignored and not recorded/emailed. The time interval refers for each day. If you need more than one day intervals, you can specify the same wish list entry twice with different intervals. Please note that the recorded start time must be after or equal the specified day. The default value is Any.

#### *Before Day*

Here you can specify a Time interval for recording only after a day . If you have specified valid times for after day and before day all matching schedules outside this interval will be ignored and not recorded/emailed. The time interval refers for each day. If you need more than one day intervals, you can specify the same wish list entry twice with different intervals. Please note that the recorded end time must be before or equal the specified day. The default value is Any.

#### *Channel*

Here you can specify a specif channel name for matching schedules. All schedules from other channels will be ignored. Please in addition to this filter also group filters can be defined as explained before. The default value is Any. The available programs in the combo box are controlled by the channel filter group below. This enables to select only a small list of relevant channels in the menu. Selected channels from other rows will always be available in the menu.

#### *Skip Repeated Episodes*

"Skip Repeated Episodes" should be checked if you do not want to get identical episodes twice. The plugin will compare the title and program description from the EPG data and skip the entry if the data are identical to any previously recorded data. The button Skip All or Skip None can be used to select all or none

#### *Up*

You can move the selected search entry up in the table whenever you click this button. The EPG search order is from top to down.



### *Down*

You can move the selected search entry down in the table whenever you click this button.

### *Delete*

The selected item in the list will be deleted

### *Default*

This will load the default settings into the selected row

### *Help*

This will open the manual

### *Cancel*

This will load the last saved table configuration. All current changes will be undone.

### *All Active*

This will set all entries to active

### *All InActive*

This will set all entries to inactive

### *TvWishList Home Page*

This will open the forum entry in the default browser

## **Email**

In the "Email" tab you can specify your email account information.

### *Account*

In the account group you specify the login data for your email account which will be used to send the reminding emails. The data must contain your email account name and your password twice to avoid typing errors. If the username is different to your email address you must enter the email address in the field after the password. Otherwise this field can be left empty and will be automatically set to your email address.

## Address

Here you specify the email address where you want to send a reminding email if a matching program has been found. Please note that an email is only been sent if the checkbox enable Email reply was enabled and the search list action includes email sending. It is very much recommended to send a test mail first to make sure the provider data and the email account data have been entered correctly.

## SMTP

This group defines your provider settings for the SMTP email account. Check the providers textbox if your provider is already contained. If they are available you only need to click at your provider to display the smtp server name, the port number and if your provider supports SSL. If your provider is not listed you need to enter those settings manually. Check your provider's FAQ or help files for finding out these infos.

## Test TvWishList

It is recommended to test the settings first by clicking this button. The plugin will now perform an immediate EPG search for your Tv wish list. The last line will show you the status and give information in case any errors occur. Please stay patient as this can take some time depending on your computer and your wish list.

The screenshot shows the 'MediaPortal - TV Server Configuration' window. On the left is a tree view with categories like Project, TV Servers, TV Channels, Radio Channels, DVB EPG, General, Recording, Timeshifting, Schedules, Streaming Server, Manual Control, Plugins, Import/Export, and Additional 3rd party checks. The 'Plugins' category is expanded, showing 'BackupSettings', 'EmailScheduler', 'Power Scheduler', 'TvWishList' (which is selected), and 'XmlTv'. The main area is titled 'TvWishList' and has three tabs: 'Main', 'Email', and 'Settings'. The 'Email' tab is active. It contains several input fields and buttons. Under 'Account', there are fields for 'User Name' (filled with 'myusername'), 'Password' (masked with dots), 'Repeat Password' (masked with dots), and 'Email Address' (filled with 'myaccount@mydomain.de' and a note 'only if different than User Name'). Under 'Address', there is an 'Email Receiver' field (filled with 'mytest@provider.de') and a 'Test Send Mail' button. Under 'SMTP', there is a 'Provider' dropdown (set to 'google(free)'), a 'Port' spinner (set to '587'), an 'SMTP Server' field (filled with 'smtp.googlemail.com'), and a checked 'SSL' checkbox. At the bottom of the main area is a 'Test TvWishList' button and a 'Ready' status indicator. The bottom of the window has a 'Donate to MediaPortal' link on the left and 'OK' and 'Cancel' buttons on the right.

MediaPortal - TV Server Configuration

Open Log directory ▾

Project

- TV Servers
- TV Channels
- Radio Channels
- DVB EPG
- General
- Recording
- Timeshifting
- Schedules
- Streaming Server
- Manual Control
- Plugins
  - BackupSettings
  - EmailScheduler
  - Power Scheduler
  - TvWishList**
  - XmlTv
- Import/Export
- Additional 3rd party checks

TvWishList

Main Email Settings

Account

User Name  
myusername

Password  
.....

Repeat Password  
.....

Email Address  
myaccount@mydomain.de  
only if different than User Name

Address

Email Receiver:  
mytest@provider.de

Test Send Mail

SMTP

Provider  
google(free)

Port  
587

SMTP Server  
smtp.googlemail.com

☒ SSL

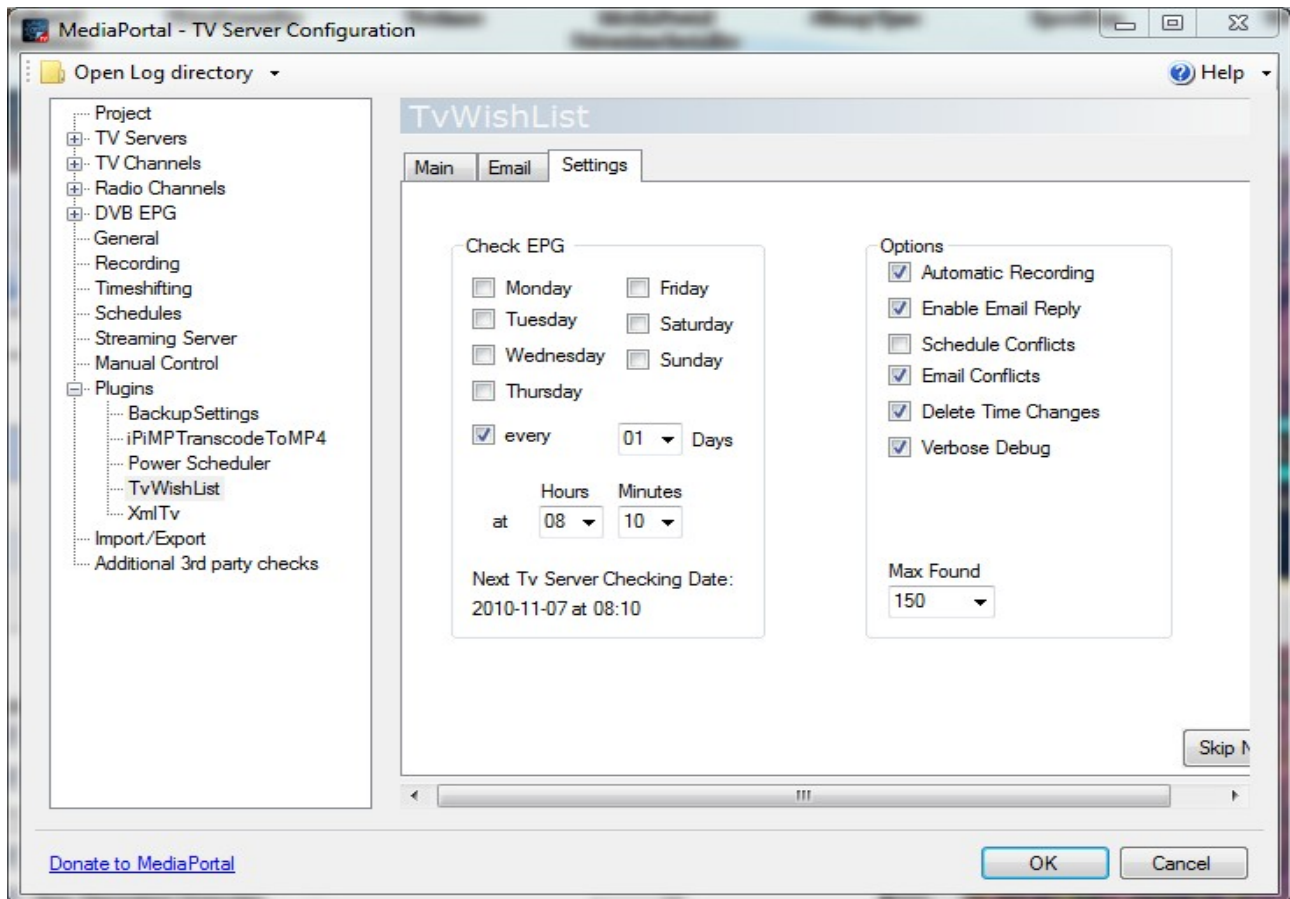
Test TvWishList

Ready

[Donate to MediaPortal](#)

OK Cancel

## Settings



### *Check EPG every*

In this group you are defining how often your EPG data will be searched against your movie list and at what time this should happen. There are two possibilities to define it. You can specify specific days or check the every box to repeat the search every x days define in the text box. The second text box defines the hours and the third the minutes. In the example above the plugin will check every Monday, Wednesday and Friday the EPG data after 8:10 and compare them against your search list defined in the main section. The next Tv server checking date and time is shown below.

### *Options*

The checkbox *"Automatic Recording"* must be enabled in order to automatically record any found programs. In addition the matching program must be specified for recording in the action column.

The checkbox *„Enable Email Reply“* must be checked to send a reminding email if this is required in the action column of the matching program.

The checkbox *"Schedule Conflicts"* will add matching schedules to Tv server even if they are causing a conflict. If the checkbox is unchecked conflicting schedules found from the wish list will be ignored.

The checkbox *"Email Conflicts"* will send an email after each EPG checking if conflicts for the schedules have been found.

*"Delete Time Changes"* will try to change any schedules, which do not have valid EPG data. The plugin will search for a new EPG entry with the same title on the same channel. If it finds a new one the old schedule will be deleted and the new one added. This is needed if the EPG data are changing for a program. It avoids multiple schedules of the same program if the start or end time has slightly changed. If no alternative program is found in the EPG data the user will receive a warning email. The old schedule will not be deleted in that case.

*"Verbose Debug"* will switch on the verbose debug in the log file and should be used if you post any issues in the forum.

The number *"Max Found"* will limit the matching schedules. In case you enter an invalid search criteria matching to nearly all EPG data the damage will be limited by recording only the first "MaxFound" programs. This number will be used for all entries in the list view. In case you do not like this feature you can set "Max Found" to a very high number, e.g. 1000000.

## FAQ and Tips

### 1. Preferred recording on a specific channel group

If you are preferring a specific channel group for your recordings (e.g. a group HDTV with HD channels or a group no\_advertisement) for your favourite movies, you can specify the tv wish twice. Make sure the first entry contains your favourite channel group and the second entry contains "All Channels" as a group. In that case recordings will be done first for your HDTV group and if not found they will be searched on "All Channels" in the second entries. There will be no doubled recordings, because the plugin will not do a second recording of a title and description which has been scheduled already.

## Change Log

### Version 1.2.0.6

- fixed bug in search function
- added expression for SQL queries
- no more support for MediaPortal version 1.0.0. final
- fixed bug for email messages (new message system)

### Version 1.2.0.2

- fixed bug on filter functions "before/after day" and "before /after time"
- output of program description
- reset all founds will reset all found counters to 0

### Version 1.2.0.1

- fixed bug on "skip none" button

- channel column is now a combobox based on the group setting in channel filters

#### **Version 1.2.0.0**

- fixed bug on wish count limit of 35 to 40. Now you should be able to specify above 10000 tv wishes
- moved global skip repeated episodes to the main table. It can now be specified for each wish.

#### **Version 1.1.1.0**

- delete scheduled recordings if mismatch with found program, because old and new epg data do not match
- exact word match for title or text
- filter option "after time" and "before time" (default any)
- filter option "after day" and "before day" (default any)
- filter option for a single channel name (default any)
- small GUI layout changes
- moved important messages from DEBUG to INFO

#### **Version 1.0.7.0**

- faster EPG data search by presorting EPG data. Prersorting takes about 30s on a Intel 1.78GHz dual core, but the time could roughly be reduced by half for each specified wish (about 15s). if you have many wishes defined you will benefit a lot from this feature.
- user option for skip reoeated schedules (see manual). Users with poor EPG data description can now disable this feature to record all episodes
- EPG checking time can be specified by week days
- improved handling of next EPG checking time (handshake between Tvservice and SetupTV)
- old EPG checking date will be restored if user is shutting down or suspending/hibernating the computer during an active EPG search of the TvService
- correct handling of integer values which are not in the drop down list in all textboxes (hours, days, minutes, max found)
- Buttons added for setting all entries active / inactive

#### **Version 0.0.0.7**

- supporting MP1.1RC2

#### **Version 0.0.0.6**

- dummy release to fix the MPEI2 issues, there are no functional code changes

#### **Version 0.0.0.5**

- fixed issue for some users with exception message during scan of EPG data
- fixed bug with advanced option "Keep Until"
- added hours and minutes for defining a time to check the EPG data

#### **Version 0.0.0.4**

- added advanced settings and additional filter options for episode and series
- fixed bug with invalid (empty) first row in table
- modified installer for install/uninstall argument in order to prepare for the new MPEI2

- installer
- added new GUI for direct list editing

### **Version 0.0.0.3**

- fixed conflict management by including the Tv server conflict management
- added user settings for Schedule Conflicts and Email Conflicts
- added back episodes (one or all) and recordings will be flagged as episodes and recorded in a folder. This allows to use episode management later from the recordings.

### **Version 0.0.0.2**

- added exclude filter
- episodes or movies will be recorded only once

Version 0.0.0.1

- initial version

## **Known Problems / Troubleshooting**

- check the forum thread link for an actual list of issues

## **Author(s) of Plugin**

1. huha

## **Acknowledgement**

1. I have reused part of the code from EmailScheduler and the conflict management from Tv server
2. I want to thank all the folks working on this project resulting in the best Media Center I have ever seen.
3. Special thanks to all users who posted their comments and helped me to improve the plugin

## **License**

```
/*
 * Copyright (C) 2005-2010 Team MediaPortal
 * http://www.team-mediaportal.com
 *
 * This Program is free software; you can redistribute it and/or modify
 * it under the terms of the GNU General Public License as published by
 * the Free Software Foundation; either version 2, or (at your option)
 * any later version.
 *
 * This Program is distributed in the hope that it will be useful,
 * but WITHOUT ANY WARRANTY; without even the implied warranty of
 * MERCHANTABILITY or FITNESS FOR A PARTICULAR PURPOSE. See the
 * GNU General Public License for more details.
 *
 * You should have received a copy of the GNU General Public License
 * along with GNU Make; see the file COPYING. If not, write to
 * the Free Software Foundation, 675 Mass Ave, Cambridge, MA 02139, USA.
 * http://www.gnu.org/copyleft/gpl.html
```