

SENSOR CONFIGURATION

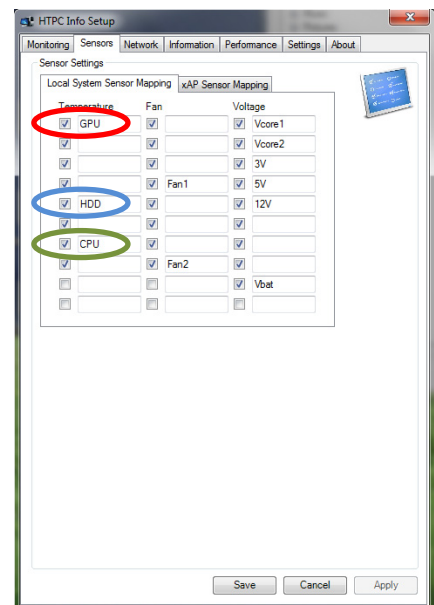
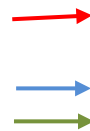
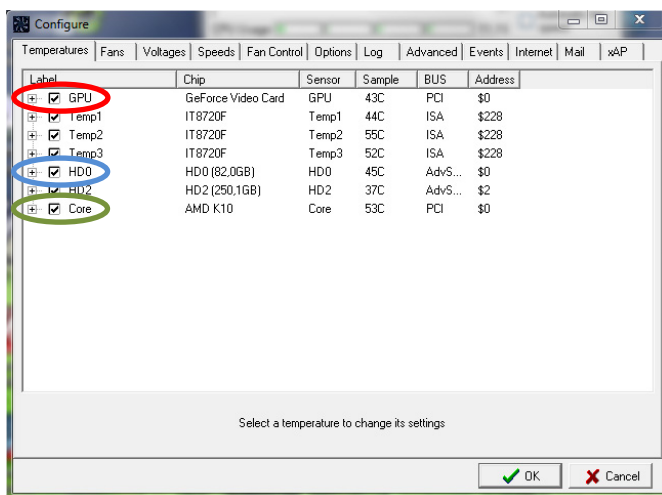
First of all pay attention that sensors values cannot be displayed until SpeedFan is installed and running on your system.

By default, SpeedFan reports the sensor values depending on built-in hardware components. That means, for example, that not always the first temperature value which was reported from SpeedFan, is the temperature value for your CPU, so, to avoid any mismatch in displaying values in Xtreme, you have to set "speaking" names in sensors configuration of HTPCInfo plugin.

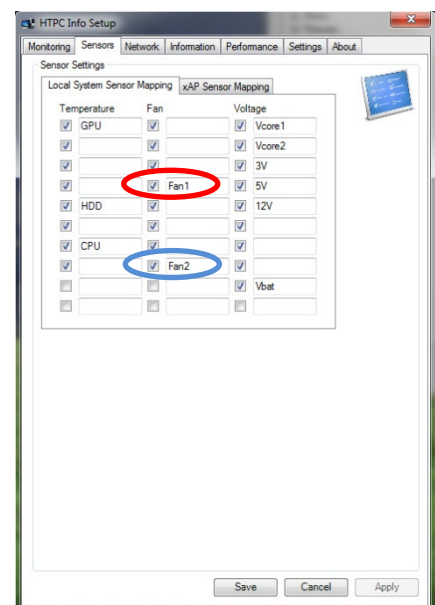
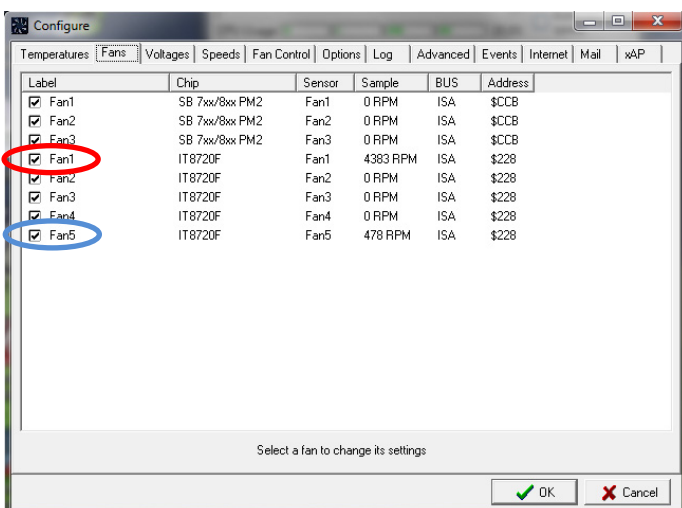
By default, HTPCInfo plugin fills the temperature, fan and voltage properties in the same order like Speedfan has determined the sensor information before.

To set property "speaking names" for properly sensors displaying in Xtreme, please do the following steps:

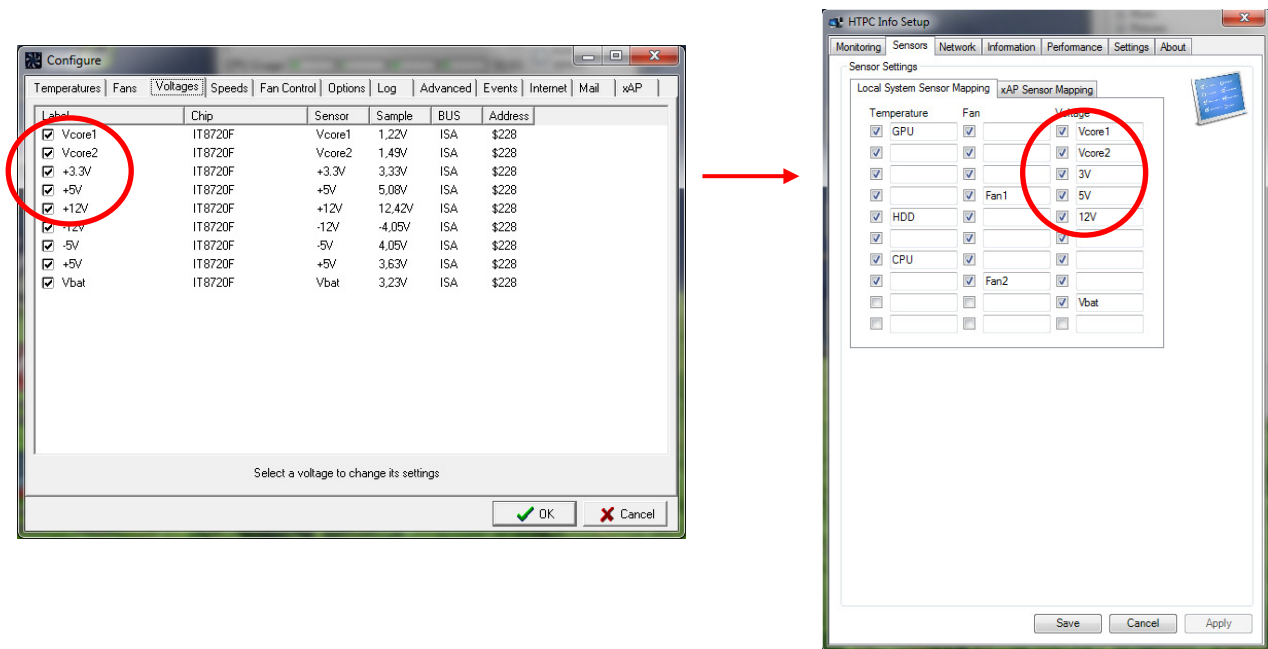
- Open your Speedfan and HTPCInfo configuration window.
- Identifies your Processor temperature sensor position in SpeedFan configuration and transfer it in the same position to your local system Temperature sensor mapping in HTPCInfo configuration, naming it as CPU (see image below)
- In the same way, identifies your Graphic Processor temperature sensor position in SpeedFan configuration and transfer it in the same position to your local system sensor mapping in HTPCInfo configuration, naming it as GPU, and your main Hard Disk sensor, naming it as HDD (see image below)



- Identifies two fan sensor to monitor in SpeedFan Fans configuration panel and transfer them in the same position to your local System Fan sensor mapping in HTPCInfo configuration, naming them as Fan1 and Fan2 (see image below)



- Identifies Vcore 1 and 2, +3.3V, +5V and +12V voltages in SpeedFan Voltages configuration panel and transfer them in the same position to your local System Voltage sensor mapping in HTPCInfo configuration, naming them respectively as: Vcore1, Vcore2, 3V, 5V and 12V (see image below)



Remember to launch SpeedFan prior to start Mediaportal