

BASICS SOFTWARE HARDWARE TIPS & TRICKS ABOUT



## Hyperion On OpenELEC. It Works!

Posted by

JACEK TOKAR

Posted on

JANUARY 12, 2014

Posted under

SOFTWARE

Comments

58 COMMENTS



After my short journey with boblight on OpenELEC that ended up tragically ;) I gave OpenELEC-Hyperion a try. First I thought it would not be possible (no apt-get, most of the file system read only), but these smart guys from Hyperion managed to make the installation process easy and quick. Most importantly, it works perfectly in opposite to boblight.

Generally [Hyperion wiki](#) gives you proper how-to, but we will enrich the description with some details that can be helpful for total beginners.

First step is to check if there is SSH and SAMBA enabled. Go to System->OpenELEC->Services:

Enable SSH – ON

Disable SSH Password – OFF

Enable SAMBA – ON

Use Samba Password Authentication – OFF

Also go to Programs (from main XBMC screen) and verify that there are NO boblight plug-ins installed. If there are any, uninstall them.

Now you need to connect to your RPi via SSH (using puTTY, for example).

```
1 | Login: root
2 | Password: openelec
```

Now you are ready to start installation by executing the following commands:

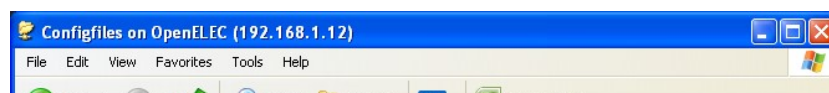
```
1 | curl -L --output install_hyperion.sh --get https://raw.githubusercontent.com/tvdzwan/hyperion/master/bin/install_hyperion.sh
2 | sh ./install_hyperion.sh
```

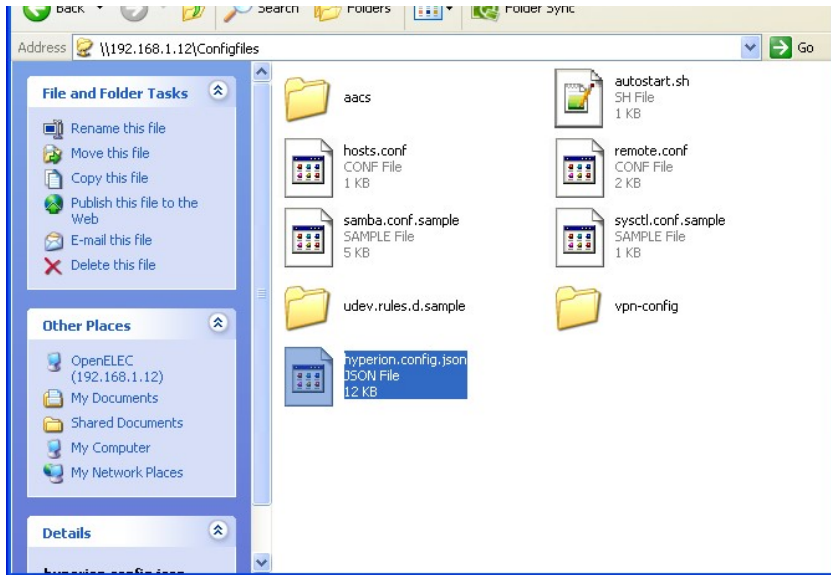
You are almost done. Now, what you need to do is to upload hyperion.config.json into /storage/.config/, but before you do that, you need to make sure that there is one section added (if already exists, should be modified). In the “effects” section you should add/modify path to reflect right OpenELEC directory.

```
1 | "effects" :
2 |   {
3 |     "paths" :
4 |     [
5 |       "/storage/hyperion/effects"
6 |     ]
7 |   },
```

Now it is time to upload the config file. With Samba enabled you can use Windows Explorer to access the OpenELEC SD card.

Go to: \\192.168.1.12\Configfiles where 192.168.1.12 is your RPi IP address





and copy file from your hard disk into OpenELEC directory.

Restart RPi and enjoy! It looks really good.

Lightberry @ OpenELEC with Hyperion works great!



TAGS:

[← Configuring boblight on OpenElec](#)

[Video Grabber for Raspberry Pi →](#)





RECENTLY ADDED:

[Kodi plugin – Hyperion Configurator](#)

[LCD for Raspberry pi \(HD44780 via PCF8574 I2C\) \(openelec\)](#)

[World’s easiest way to set up WiFi Access Point](#)

[Control Lightberry from Kodi/XBMC HTPC over network](#)

[Raspberry Pi 2 & Lightberry = <3](#)

TAGS

[3g](#) [access point](#) [ap](#) [connection](#) [dhcp](#) [DLNA](#) [download](#) [driver](#) [File server](#) [firmware](#) [forwarding](#) [hostname](#) [hyperion](#) [internet](#) [IP](#) [iptables](#) [Lightberry](#) [linux](#) [lms](#) [mobile](#)  
[modern](#) [Movies](#) [mpd](#) [Music network](#) [openelec](#) [Pictures](#) [PS3](#) [Putty](#) [radio](#) [raspberrypi](#) [raspberrypi](#) [router](#) [server](#) [show](#) [shows](#) [sickbeard](#) [software](#)  
[squeezebox](#) [ssh](#) [static](#) [Torrent](#) [Video](#) [wifi](#) [wireless](#)

[Subscribe via RSS](#)

PARTNERS

[Raspberry Pi, sklep, zestawy](#)

[Raspberry Hardware \(DE\)](#)