

# MailTip for MediaPortal

Version 1.4.1

Copyright © 2013-2016 Alexander Gola (aka Micropolis)

Portions of POP Mailer Copyright © 2013 foens

Portions of IMAP Mailer Copyright © 2009 Rohit Joshi

Portions of EAS Mailer Copyright © 2012 Microsoft Corporation

Icon Artwork Copyright © [YellowIcon](#), [Flahorn](#), [Icons-Land](#), [BanzaiTokyo](#), [Fatcow](#), [Harwen](#), [SvenGraph](#)



## 1. Summary

MailTip is a MediaPortal plugin to manage mail messages for up to 10 mailboxes. Supported mail protocols are Post Office Protocol (POP), Internet Message Access Protocol (IMAP) and Microsoft Exchange ActiveSync (EAS).

## 2. Requirements

This plugin requires MediaPortal v1.3.0 or higher (for more information see the homepage <http://www.team-mediaportal.com>).

## 3. Installation

To install the MailTip plugin, please run the installer "MailTip.mpe1" or, if you want to manually install the plugin, follow the described steps:

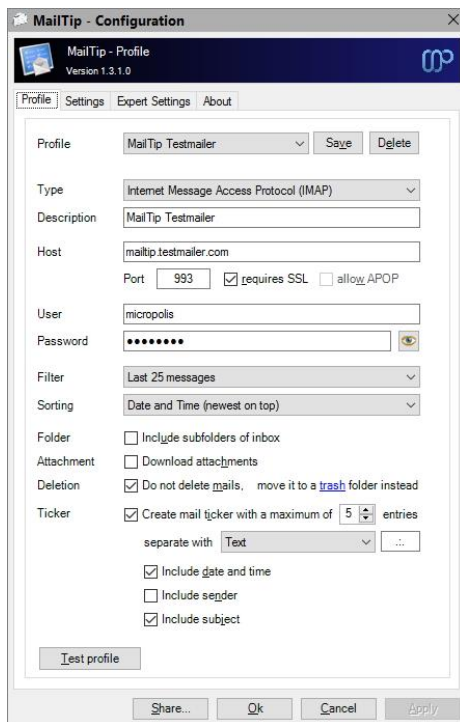
- Step 1: unzip the file "MailTip.zip" to a temporary directory and open this directory
- Step 2: navigate to folder "*MailTip\Release\Plugins\Windows*"
- Step 3: copy all files to the MediaPortal plugin directory, e.g. "*c:\program files\team mediaportal\plugins\windows*"
- Step 4: navigate to folder "*MailTip\Release\Skin\Default*"
- Step 5: copy all files and directories to your MediaPortal skin folder, e.g. "*c:\program data\team mediaportal\mediaportal\skin\default*"
- Step 6: navigate to folder "*MailTip\Release\Skin\Default\Media*"
- Step 7: copy all files and directories to your MediaPortal skin folder, e.g. "*c:\program data\team mediaportal\mediaportal\skin\default\media*"
- Step 8: navigate to folder "*MailTip\Release\Language\MailTip*"
- Step 9: copy all files to your MediaPortal language folder, e.g. "*c:\program data\team mediaportal\mediaportal\language\MailTip*"

## 4. Configuration

MailTip has specific configuration options. To change this, please open your MediaPortal Configuration Utility, go to “Plugins”, select “MailTip” in the list of plugins and press button “Config” to change options.

### 4.1. Profile

**Profile:** Select the specified profiles here.



**Type:** Specifies the mailbox type.

**Description:** Enter a mailbox description here.

**Host, Port, SSL, APOP:** Specify the mailbox internet connection here (A list of configuration settings for some international and German mail providers can be found [here](#)).

**User/Domain, Password:** Specify the mailbox credentials here.

**Filter:** Select the filter settings here.

**Sorting:** Select the sorting settings here.

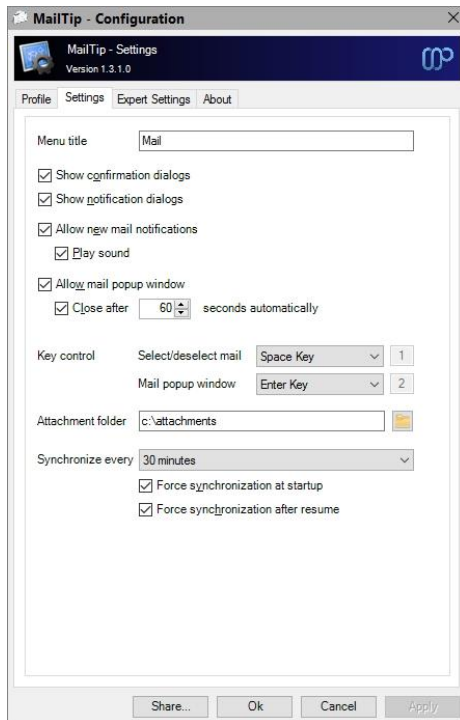
**Folder:** Configure the mailbox search behavior here (due to restrictions of the POP protocol, this functionality is only available, if your mailbox has been configured for IMAP or EAS protocol).

**Attachment:** Configure the mail attachment download behavior here.

**Deletion:** Configure the deletion behavior here (due to restrictions of the POP protocol, this functionality is only available, if your mailbox has been configured for IMAP or EAS protocol). **Important:** You can click the hyperlink to create a new or set an existing mailbox folder. In case no folder is defined, all trash related operations will be failed.

**Ticker:** Configure the behavior and content of your mail ticker here.

## 4.2. Settings



**Menu title:** Enter the menu title here.

**Show confirmation dialogs:** If this option is turned on, a confirmation dialog opens before starting any action.

**Show notification dialogs:** If this option is turned on, notification dialog opens in various situations.

**Allow new mail notifications:** Please define the behavior for the new mail notification here. Please be aware, that the notification dialog does not come up in full screen mode.

**Allow mail popup window:** Please define the behavior of the popup window inclusive the automatic close timeout here.

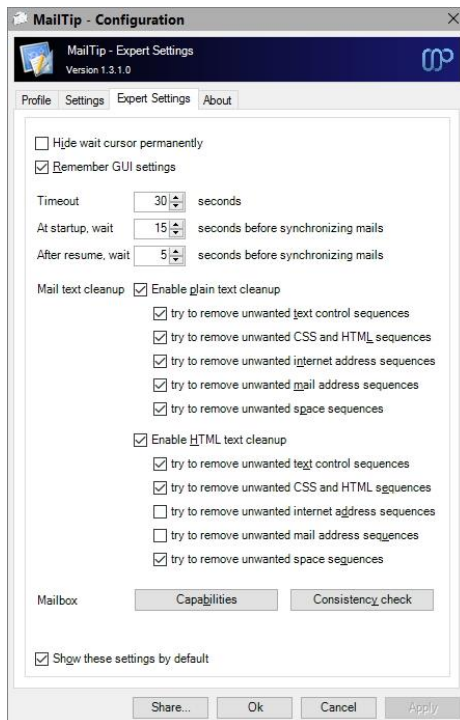
**Key control:** Please define the keys to select/deselect mails and to open the mail popup window.

**Attachment folder:** Configure the mail attachment folder here.

**Synchronize every:** Please define the refresh period and appropriate options here.

### 4.3. Expert Settings

The configuration dialog allows you to edit some expert settings. By default, the appropriate options are hidden and will be shown only, if you check the appropriate setting before or when the Shift and the “Config” button are pressed simultaneously.



**Hide wait cursor permanently:** Allows you to suppress wait cursor display.

**Remember GUI settings:** Saves the GUI settings (e.g. selected view) before closing MediaPortal.

**Timeout:** Defines the timeout for each internet related operations.

**At startup, wait:** Count of seconds before refresh of mails at startup.

**After resume, wait:** Count of seconds before refresh of mails after resume.

**Mail text cleanup:** Tries to remove some unwanted sequences within the mail text. It's possible to configure the options for plain or HTML text separately. (**Please handle with care**).

**Capabilities:** Displays an overview about the capabilities of configured mailbox.

**Consistency check:** Displays consistency information of configured mailbox.

## 5. Settings and Profile Sharing

By default, all plugin related settings will be saved locally inside the pre-configured client data directory of MediaPortal. In addition to that, MailTip allows sharing settings and profile information among clients. This way you have to define your various plugin settings, credentials, etc. only once and accordingly every client can access this data. Before starting with settings and profiles sharing, please observe the following hints and requirements.

- In principle all local and network storages or cloud services (e.g. OneDrive, Dropbox, SugarSync) can be used for sharing. Before using this feature, possible device or service specific configurations should be checked to prevent access or synchronization problems later.
- The current implementation does not support concurrent read or write operations. Also, the synchronization or latency behavior of a device or service cannot be influenced.
- When using a shared network folder, the device must be available and the operating system must know the credentials to access the device.
- When using an OneDrive folder, an internet connection must be established and the synchronization tool must be installed and running across all devices. Additionally the selected OneDrive folder must be available offline (Windows 8 and below only) or enabled as a sync folder.
- When using a Dropbox folder, an internet connection must be established and the synchronization tool must be installed and running across all devices. Additionally the selected Dropbox folder must be enabled as a selective sync folder.
- To share passwords or keys correctly, all synchronized devices must be in the same network domain or workgroup.

The button “Share” inside the dialog allows the definition of the central configuration storage path. Enter this path information in every client’s setup to ensure, that each clients will use the same settings.

Depending on the selection, the button “Ok” will use the central file storage as defined (when sharing is enabled) or the pre-configured client data directory (when sharing is disabled). The button “Apply” acts in the same way without closing the configuration dialog itself.

## 6. Window Properties

This plugin offers some properties, see the following table for more information.

Property Name	Return value
#MailTip.Action	Current action ("Idle", "Connect", "Disconnect", "Receive", "Delete", "Trash")
#MailTip.MailboxType	Type of mailbox
#MailTip.MailboxDescription	Description of mailbox
#MailTip.MailboxProvider	Provider name of mailbox
#MailTip.MailboxProviderImage <sup>1</sup>	Provider image of mailbox
#MailTip.MailboxIncomingHost	Hostname of incoming mailbox server
#MailTip.MailboxIncomingPort	Port number of incoming mailbox server
#MailTip.MailboxIncomingUseSSL	SSL usage of incoming mailbox server (enabled/disabled)
#MailTip.MailboxIncomingUseAPOP	APOP usage of incoming mailbox server (enabled/disabled)
#MailTip.MailboxUserName	User name of incoming mailbox server
#MailTip.MailboxQuota	Quota settings of mailbox
#MailTip.MailboxSynchronizationDate	Date of last mailbox synchronization
#MailTip.MailboxSynchronizationTime	Time of last mailbox synchronization
#MailTip.MailboxMailCount	Count of mails in mailbox inbox folder
#MailTip.MailboxMailTotalCount	Total count of mails in mailbox
#MailTip.MailboxFolderCount	Count of folders in mailbox inbox folder
#MailTip.MailboxFolderTotalCount	Total count of folders in mailbox
#MailTip.MailboxFolderRootCount	Count of folders in mailbox root folder
#MailTip.MailboxFilter	Current filter settings of mailbox
#MailTip.MailboxSorting	Current sorting settings of mailbox
#MailTip.MailboxSubfolderSearchEnabled	Indicator for mailbox subfolder search configuration (true/false)
#MailTip.MailboxAttachmentDownloadEnabled	Indicator for mailbox attachment download configuration (true/false)

#MailTip.ReceiveProgress	Progress indicator for mailbox receive action
#MailTip.MailCount	Count of displayed mail messages
#MailTip.MailSelectCount	Count of selected mail messages
#MailTip.MailNumber	Number of selected mail message in list
#MailTip.MailID	Unique ID of selected mail message in list
#MailTip.MailFolder	Folder name of selected mail message in list
#MailTip.MailSender	Sender of selected mail message in list
#MailTip.MailSenderImage <sup>2</sup>	Sender image of selected mail message in list
#MailTip.MailCC	Copy recipient of selected mail message in list
#MailTip.MailBCC	Blind copy recipient of selected mail message in list
#MailTip.MailSubject	Subject of selected mail message in list
#MailTip.MailPriority	Priority of selected mail message in list
#MailTip.MailPriorityImage <sup>3</sup>	Priority image of selected mail message in list
#MailTip.MailDate	Date of selected mail message in list
#MailTip.MailTime	Time of selected mail message in list
#MailTip.MailText	Text of selected mail message in list
#MailTip.MailSize	Size of selected mail message in list
#MailTip.MailAttachment	Count of file and graphic attachments for selected mail message in list
#MailTip.MailAttachments	File name of file and graphic attachments for selected mail message in list
#MailTip.MailJunk	Junk indicator for selected mail message in list
#MailTip.MailVirus	Virus indicator for selected mail message in list
#MailTip.MailMeeting	Indicator, if selected mail message in list is a meeting request (true/false)
#MailTip.MailMeetingSummary	Summary of meeting for mail message in list
#MailTip.MailMeetingStatus	Status of meeting for mail message in list
#MailTip.MailMeetingOrganizer	Organizer of meeting for mail message in list
#MailTip.MailMeetingLocation	Location of meeting for mail message in list

#MailTip.MailMeetingStartDate	Start date of meeting for mail message in list
#MailTip.MailMeetingStartTime	Start time of meeting for mail message in list
#MailTip.MailMeetingStartTimezone	Time zone of start time of meeting for mail message in list
#MailTip.MailMeetingEndDate	End date of meeting for mail message in list
#MailTip.MailMeetingEndTime	End time of meeting for mail message in list
#MailTip.MailMeetingEndTimezone	Time zone of end time of meeting for mail message in list
#MailTip.MailEnvelopeImage <sup>4</sup>	Envelope image (incl. priority and attachment indicator) of selected mail message in list
#MailTip.MailNewestDate	Newest date of mail messages in list
#MailTip.MailNewestTime	Newest time of mail messages in list
#MailTip.MailOldestDate	Oldest date of mail messages in list
#MailTip.MailOldestTime	Oldest time of mail messages list
#MailTip.MailTicker	Ticker for a configurable count of mail message
#MailTip.MailTickerEnabled	Indicator for mail ticker configuration (true/false)
#MailTip.NotificationEnabled	Indicator for new mail notification configuration (true/false)
#MailTip.PopupEnabled	Indicator for mail popup configuration (true/false)
#MailTip.MailTextCleanupEnabled	Indicator for mail text cleanup configuration (true/false)

<sup>1</sup> – currently supported providers are 1und1, Alice, AOL, Arcor, Bluewin, Chello, free, Freenet, GMX, GoDaddy, Google, Hotmail, KabelBW, Kabel Deutschland, Lycos, Microsoft, MyKolab, NetCologne, O2, Outlook.com, Posteo, Rediff, Strato, T-Online, UnityMedia, Vodafone, Web.de, Yahoo, Yandex.

<sup>2</sup> – valid image can contain each character except “.”, “@” and “-” and must be saved as a PNG file in the MailTip media sender directory.  
(Example: “noreply@team-mediaportal.com” would be converted to “noreply\_team\_mediaportal\_com”).

<sup>3</sup> – valid images are “high.png”, “normal.png” and “low.png”.

<sup>4</sup> – valid images are “highattachment.png”, “highnoattachment.png”, “normalattachment.png”, “normalnoattachment.png”, “lowattachment.png” and “lownoattachment.png”, “highmeeting.png”, “normalmeeting.png” and “lowmeeting.png”.

## 7. Translation Properties

Property Name	Return value
#MailTip.TranslationAction	Appropriate translations
#MailTip.TranslationSubject	
#MailTip.TranslationSender	
#MailTip.TranslationCC	
#MailTip.TranslationBCC	
#MailTip.TranslationPriority	
#MailTip.TranslationAttachment	
#MailTip.TranslationNoAttachment	
#MailTip.TranslationMeeting	
#MailTip.TranslationMailboxEmpty	
#MailTip.TranslationMailboxUndefined	
#MailTip.TranslationMailboxSettings	
#MailTip.TranslationMailboxQuota	
#MailTip.TranslationMailboxSynchronization	
#MailTip.TranslationReceiveProgress	
#MailTip.TranslationOf	
#MailTip.TranslationSelected	
#MailTip.TranslationFrom	
#MailTip.TranslationTo	

## 8. Button Functions

**Mailbox ...:** Select your preferred mailbox here.

**Delete/Trash messages:** Deletes or trash selected mail messages.

**Delete/Trash all messages:** Deletes or trash all mail messages, which are filtered currently.

**Save attachments:** Save all mail attachments from the currently selected mail to the specified folder.

**Refresh:** Refresh all mail messages.

## 9. Context Menu Functions

**Filter settings....:** Change your current filter settings.

**Sort settings....:** Change your current sort settings.

**Selection criteria's....:** Change your selection criteria's for mail messages.

**Switch subfolder search on/off:** Change the behavior of mailbox subfolder search.

**Switch attachment download on/off:** Change the behavior of mail attachment download.

**Switch mail text cleanup on/off:** Change the behavior of mail text cleaner (only visible if expert settings are activated).

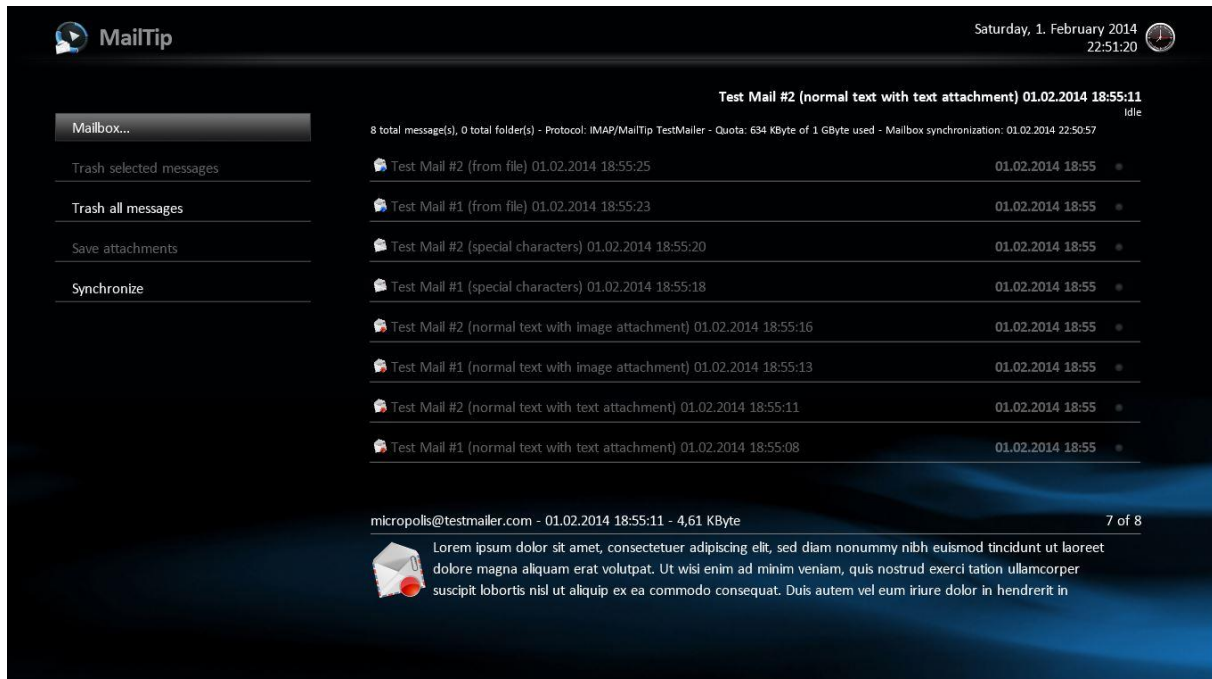
## 10. List Functions

**SPACE key:** Select/deselect mail.

**ENTER key:** Open the mail specific popup window in case the appropriate option is enabled.

(These default keys can be overwritten within the configuration dialog)

## 11. Screenshots



MailTip example



MailTip popup window example

## 12. Troubleshooting

### 12.1. T-Online

Restriction	Solution
an IMAP folder named “Trash” cannot be created, because it’s a predefined name	<ul style="list-style-type: none"><li>• create a IMAP trash folder with a different name</li><li>• set your trash folder to “Trash”, but don’t create it</li></ul>

### 12.2. GoDaddy

Restriction	Solution
the POP connection server reports support for alternative authentication method APOP, but the mail server itself does not allow this authentication mechanism	<ul style="list-style-type: none"><li>• disable APOP in the configuration dialog</li></ul>

## 13. Version History

- 0.1.0 – Initial Community Release
- 0.1.1 – POP protocol fixes for some providers, IMAP protocol support, property additions/changes (see chapter 5 and 6)
- 0.1.2 – minor enhancements to the configuration related “Test profile” functionality
- 0.2.0 – major improvements to POP and IMAP protocol routines, harmonization of code, add filter and sort options and context menu
- 0.2.1 – mailbox receive progress indicator added, more ticker configuration options, skin and translation changes
- 0.2.2 – fix for wrong POP mail related event progress call, message deletion functionality added
- 0.2.3 – all message deletion functionality added, fix a potential sort menu issue, fix a potential button issue when MailTip is not in foreground, finalize remember GUI settings, skin and translation changes
- 0.2.4 – popup support for selected mail added, some new properties added
- 0.3.0 – restructuring of media folder, provider name and image support, mailbox related properties renamed, some new properties added, translations added
- 0.3.1 – mail popup window functionality is optional now, provider images added
- 0.3.2 – new mail notification added, context menu for selection criteria’s added, fix for deletion notification issues, translations added
- 0.3.3 – fix potential problem for button handling in case MailTip is not in foreground, provider support correction for Hotmail, improved logging, fix popup open issue when no messages displayed, first implementation of troubleshooting settings started
- 0.3.4 – rework of mailbox connection/disconnection logic to prevent mailbox synchronization issues, code hardening, expert configuration settings added, UI and performance improvements, translations added
- 0.3.5 – enhancements to password encryption/decryption, minor configuration dialog enhancements, property to display the count of selected mail messages added, selection criteria menu extended, providers added, translations added
- 0.3.6 – ticker separator configuration options added, fix for a potential memory leak in IMAP related routines
- 0.3.7 – rework of attachment detection routines, fix an issue of new mail notification, attachment list and envelope related properties added, fine tuning and code hardening, translations added
- 0.3.8 – rework of POP and IMAP related attachment and content routines, properties for filter and sorting settings added, fine tuning and code hardening
- 0.3.9 – “Test profile” functionality extended to mailbox capability information, configuration related properties added, fine tuning and code hardening, translations added
- 0.3.10 – fine tuning for IMAP related encoding routines (UTF-7, UTF-8, Base64)
- 0.3.11 – fine tuning for IMAP related encoding routines (ISO-8859-1) and alternative multipart
- 0.3.12 – cleaning related expert settings added, enhancements to context menu to allow filter settings in case mailbox is empty
- 0.3.13 – fine tuning for POP related encoding routines (Base64)
- 0.4.0 – first official repository release
- 0.4.1 – option to enable/disable new mail notifications (incl. notification sound) added, alternative refresh update interval added
- 0.4.2 – major improvements to mail text cleanup functionality, property to display mail sender image added, code stabilization for mail core routines, translations added

- 0.4.3 – alternative filter types added, minor improvements to mail text cleanup functionality, fine tuning for IMAP related encoding routines (Base64), add POP/IMAP support for legacy encoding types (windows-1250, windows-1251, windows-1252), add POP/IMAP support for meeting requests incl. related properties, translations added
- 0.4.4 – fix filter issue, fix for canceled meeting request detection, more meeting request properties added, improvements to mail text cleanup functionality (CSS, HTML), translations added
- 0.4.5 – fix ticker issue, IMAP quota functionality incl. related property added, properties for last mailbox synchronization added, IMAP mail size detection added, delete/delete all mail safety question for changed mailbox content added, finalize dialog handling, translations added
- 0.4.6 – fix for IMAP mail size detection, functionality to move messages to trash instead of delete messages permanently (IMAP only) added, translations added
- 0.4.7 – IMAPUTF7 folder encoding routines added, fix for some core issues in case IMAP namespaces are enabled by default, possibility to create or set the trash folder in configuration added
- 0.4.8 – rework of configuration dialog regarding mailbox capability display and consistency check
- 0.4.9 – rework of connection/disconnection logic, fix some status issues in case mailbox is not reachable, improve junk detection routines
- 0.5.0 – release candidate for final version
- 0.5.1 – key control functionality added, improvements to mail text cleanup functionality, logging improvements
- 0.5.2 – complete rework of key handling, fix POP disconnection issue
- 0.5.3 – fix for key handling in case mail list is focused and any context menu or dialog is open
- 0.5.4 – fix translation and DefaultWide skin issues
- 0.5.5 – mouse support to key handling routines added
- 0.5.6 – functionality to synchronize mailbox after system resume added, some refinements to mail text decoding for POP/IMAP, update due to changes of communication&mail framework v1.1.0
- 0.5.7 – fix a possible deadlock in case refresh mailbox at startup is enabled
- 0.5.8 – initial integration of EAS protocol framework
- 0.5.9 – enhancements to connection/disconnection logic, fix some EAS related issues
- 0.6.0 – folder related properties added, minor translation changes
- 0.6.1 – partly rework of Test Profile functionality, fix an issue for IMAPUTF7 encoding and german characters
- 0.6.2 – enhancements regarding EAS protocol version 14.0 and above, mandatory EAS device provision feature added
- 0.6.3 – meeting related support for EAS added, rework POP/IMAP meeting support
- 0.6.4 – functionality to download/save mail attachments added, enhancements to the context menu, translations added, fix EAS/IMAP mail count issue when subfolder search is enabled, fix EAS mail priority detection issue
- 0.7.0 – rework mail action routines, minor performance improvements
- 0.7.1 – change target framework to .NET 4.0, support for updated plugin framework v1.2.0
- 0.7.2 – change compatibility flags to support MediaPortal v1.7.0
- 1.0.0 – final version
- 1.0.1 – improvements to IMAP account handling, better support for failed extended list commands
- 1.0.2 – fix issue for new mail notification message, change compatibility flags to support MediaPortal v1.8.0
- 1.0.3 – support for updated plugin framework v1.3.0, enhancements to APOP authentication method for POP accounts

- 1.0.4 – support for GoDaddy added
- 1.0.5 – rework update mechanism, changes to support plugin framework 1.3.0
- 1.1.0 – change compatibility flags to support MediaPortal v1.9.0
- 1.1.1 – internal test release
- 1.1.2 – change compatibility flags to support MediaPortal v1.10.0
- 1.1.3 – architectural enhancements
- 1.2.0 – rework of configuration dialog
- 1.3.0 – cryptographic routines updated, functionality to share settings and profiles added, support for MediaPortal v1.12.0
- 1.3.1 – rework of message management routines, improvements to sharing functionality, maintenance
- 1.4.0 – support for plugin framework v1.4.0, change compatibility flags to support MediaPortal v1.13.0
- 1.4.1 – maintenance release, change compatibility flags to support MediaPortal v1.14.0

## 14. Skin Changes

- 0.1.0 – see template
- 0.2.1 – button ID 3 “Delete messages” added, #MailTip.Action is static indicator now (please use #MailTip.TranslationAction instead), images for mail priority and selection added (see included media folder)
- 0.2.3 – button ID 4 “Delete all messages” added
- 0.2.4 – mandatory skin file “mailtipoverlay.xml” added
- 0.3.0 – restructuring of media folder (see included template), mailbox related properties renamed
- 0.3.7 – media folder “Envelope” added
- 0.4.1 – media folder “Notification” incl. sound file “notification.wav” added
- 0.4.2 – optional media folder “Sender” incl. sender template image added
- 0.4.3 – new envelope images added
- 0.6.4 – change button ID 5 “Synchronize” to ID 9, button ID 5 “Save attachments” added

## 15. Known Limitations

- This plugin does not implement any cache mechanism for storing mail content locally. Whenever you start the plugin, the mailbox content will be loaded completely again.
- The main goal of this plugin is to read mails. Because of this, this plugin is not a full-fledged program to manage a mailbox nor a replacement for a mail client.
- Rendering of HTML messages is not possible, only text bodies of such messages will be handled.
- Maybe not all messages can be displayed correctly. This is caused due to missing information in the mail itself, existing encoding issues for different character sets, code sets and code pages.

## 16. Copyright Information

This Program is free software; you can redistribute it and/or modify it under the terms of the Microsoft Public License (Ms-PL).

This Program is distributed in the hope that it will be useful, but WITHOUT ANY WARRANTY; the software is licensed "as-is." You bear the risk of using it. The contributors give no express warranties, guarantees or conditions. You may have additional consumer rights under your local laws which this license cannot change. To the extent permitted under your local laws, the contributors exclude the implied warranties of merchantability, fitness for a particular purpose and non-infringement.

(<http://www.opensource.org/licenses/ms-pl.html>)

