

Sleep Control for MediaPortal

Version 1.9.1

Copyright © 2009-2016 Alexander Gola (aka Micropolis)

Icon Artwork Copyright © [The Iconlab](#), [Mazen177](#), [Harwen](#), [Icons-Land](#)



1. Summary

SleepControl is a MediaPortal plugin to shutdown, hibernate or restart your computer after user defined time periods, automatically or by existing recording schedules.

2. Requirements

This plugin requires MediaPortal v1.3.0 or higher (for more information see the homepage <http://www.team-mediaportal.com>). Some TV Server libraries (TVControl.dll, TVLibrary.Interfaces.dll, TVDatabase.dll) must exist in your MediaPortal installation directory.

3. Installation

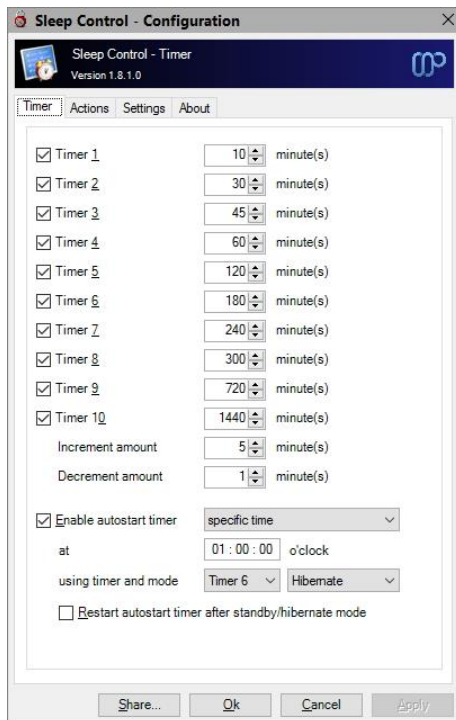
To install the SleepControl plugin, please run the installer "SleepControl.mpe1" or, if you want to manually install the plugin, follow the described steps:

- Step 1: unzip the file "SleepControl.zip" to a temporary directory and open this directory
- Step 2: navigate to folder "*SleepControl\Release\Plugins\Windows*"
- Step 3: copy all files to the MediaPortal plugin directory, e.g. "*c:\program files\team mediaportal\plugins\windows*"
- Step 4: navigate to folder "*SleepControl\Release\Skin\Default\Media*"
- Step 5: copy all files and directories to your MediaPortal skin folder, e.g. "*c:\programdata\team mediaportal\mediaportal\skin\default\media*"
- Step 6: navigate to folder "*SleepControl\Release\Language\SleepControl*"
- Step 7: copy all files to your MediaPortal language folder, e.g. "*c:\programdata\team mediaportal\mediaportal\language\SleepControl*"
- Step 8: navigate to folder "*SleepControl\Release\Skin\Default*"
- Step 9: copy all files to your MediaPortal skin folder, e.g. "*c:\programdata\team mediaportal\mediaportal\skin\default*"

4. Configuration

If you have installed the plugin, please open your MediaPortal Configuration Utility, go to “Plugins”, select “SleepControl” in the list of plugins and press button “In Home” or “In Plugins” for your desired location.

4.1. Timer



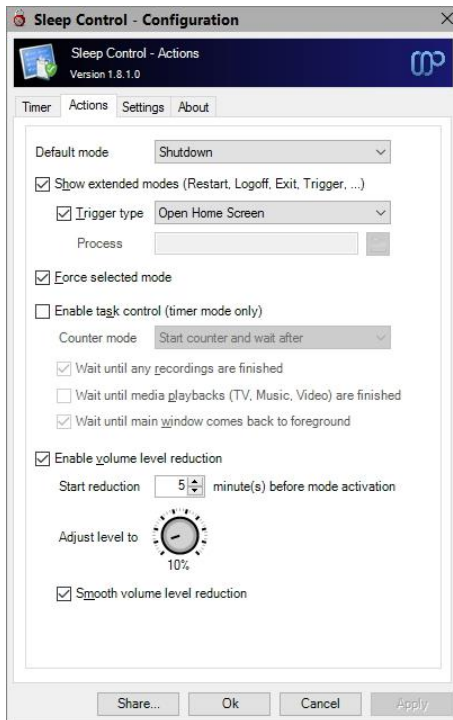
Timer 1-10: Here you can define up to 10 different sleep timers, which you can select later. Only values between 1 to 1440 minutes are accepted.

Increment / Decrement amount: Enter the increment / decrement amount, values between 1 to 1440 minutes can be accepted.

Enable autostart timer: If this option is turned on, a defined timer starts at startup or by a specific time. Please choose the appropriate time, timer and mode before.

Restart autostart timer: If you want to restart the autostart timer after standby or hibernate mode, please check this option.

4.2. Actions



Default mode: Specify the default mode here.

Show extended modes: By default, you can choose between the sleep modes “Shutdown”, “Hibernate” or “Standby”. If you switch on this option, you can also select “Restart”, “Logoff”, “Exit”, “Stop Playback” and “Trigger”.

Trigger type¹: Here you can select the trigger mode “Open Home Screen”, “Open Basic Home Screen” or “Start Process”. If you select the last mode, please enter or select the executable file, which you want start.

Force selected mode: By default, an activated sleep mode wait until all related system tasks are finished. Switch on this option, if you want to force the selected sleep mode.

Enable task control: If you switch on this option, the plugin will not start the action and wait, until selected tasks (recording and/or a media playback) are finished or the main window of MediaPortal comes back to foreground. This function can be used in timer mode only.

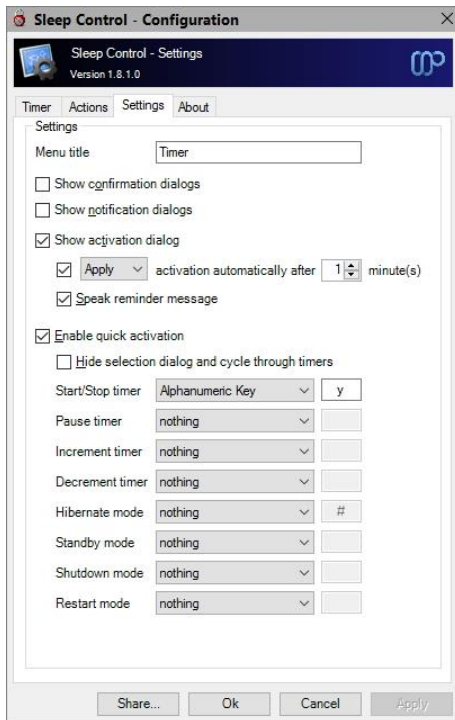
Counter Mode: Select the counter mode here, possible selections are “Stop counter, wait and restart” and “Decrease counter and wait”.

Enable Volume Reduction: If you switch on this option, the mixer volume will be decreased until the defined level. Higher values than actually volume level will be ignored.

Important hint: This functionality controls the internal mixer volume and not the master volume. Because of this, some incompatibilities can be exists between different operating systems.

¹: This functionality was added to ensure compatibility with some other plugins (e.g. GMPS, PowerScheduler).

4.3. Settings



Menu title: Define the menu title.

Show confirmation dialog: If you switch on this option, a confirmation dialog appears before your selected sleep mode will be executed.

Show notification dialog: If this option is switch on, notification dialogs will be displayed.

Show activation dialog: If this option is switch on, a confirmation dialog opens, where you can decide to start or stop the selected mode. Additionally you can specify, after which time and decision the activation dialog closes automatically.

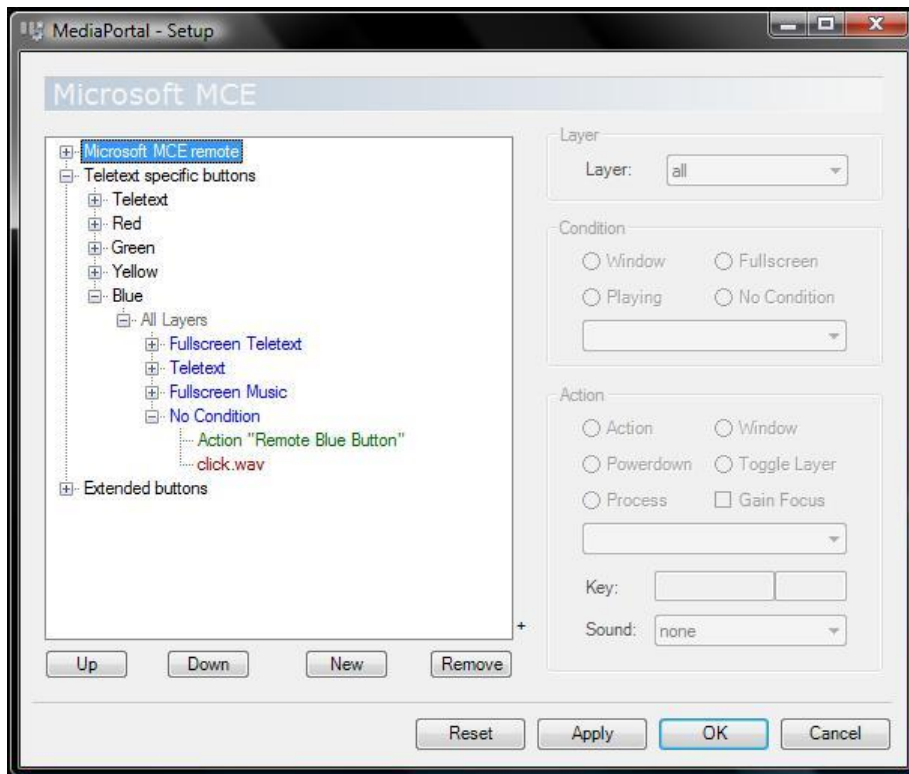
Enable quick activation: If you switch on this option, you can select and start/stop/increment the timer and activate modes directly with your remote button. This function works only, if you have setup your remote control before. For more information, please see chapter "Remote Control Configuration".

Hide selection dialog and cycle through timers: If this option is switch on, the timer selection dialog will not be opened, you can use the cycle timer activation key to walk through defined timers.

Hint: You can map activation keys for "Start Timer" and "Increment Timer" to the same key. In this case, the function "Stop Timer" is not available.

5. Remote Control Configuration

If you have switch on the quick activation mode inside the SleepControl dialog, the selected activation key must be enabled in the remote section. For this, please select “Remote” and press button “Mapping””.



Open the configuration for your selected quick activation button (blue/green/red/yellow button) inside the tree and ensure, that “No Condition” is set to the required option, e.g. for the blue button action “Remote Blue Button” must be selected.

6. Settings and Profile Sharing

By default, all plugin related settings will be saved locally inside the pre-configured client data directory of MediaPortal. In addition to that, SleepControl allows sharing settings and profile information among clients. This way you have to define your various plugin settings, credentials, etc. only once and accordingly every client can access this data. Before starting with settings and profiles sharing, please observe the following hints and requirements.


- In principle all local and network storages or cloud services (e.g. OneDrive, Dropbox, SugarSync) can be used for sharing. Before using this feature, possible device or service specific configurations should be checked to prevent access or synchronization problems later.
- The current implementation does not support concurrent read or write operations. Also, the synchronization or latency behavior of a device or service cannot be influenced.
- When using a shared network folder, the device must be available and the operating system must know the credentials to access the device.
- When using an OneDrive folder, an internet connection must be established and the synchronization tool must be installed and running across all devices. Additionally the selected OneDrive folder must be available offline (Windows 8 and below only) or enabled as a sync folder.
- When using a Dropbox folder, an internet connection must be established and the synchronization tool must be installed and running across all devices. Additionally the selected Dropbox folder must be enabled as a selective sync folder.
- To share passwords or keys correctly, all synchronized devices must be in the same network domain or workgroup.

The button “Share” inside the dialog allows the definition of the central configuration storage path. Enter this path information in every client’s setup to ensure, that each clients will use the same settings.

Depending on the selection, the button “Ok” will use the central file storage as defined (when sharing is enabled) or the pre-configured client data directory (when sharing is disabled). The button “Apply” acts in the same way without closing the configuration dialog itself.

7. Window Properties

This plugin offers some properties, which can be used in skin files. See the following table for more information.

Property Name	Return value
#SleepControl.Activity	Activity ("Timer is active" / "Timer is inactive")
#SleepControl.Method	selected mode (e.g. "Shutdown Mode", "Hibernate Mode", ...)
#SleepControl.Counter	Counter until end time (mm:hh:ss)
#SleepControl.Text	Information text, contains the selected sleep mode and the actual counter
#SleepControl.Start	Start time (including translation)
#SleepControl.StartTime	Start time
#SleepControl.End	End time (including translation)
#SleepControl.EndTime	Start time
#SleepControl.Status	Status information (e.g. "Waiting until recording is finished...")
#SleepControl.Type	Type of counter ("undefined", "manual timer", "recording timer")
#SleepControl.Image	Mode image ¹ 
#SleepControl.ManualTimerCount	Count of configured manual timer
#SleepControl.RecordingTimerCount	Count of possible recording timers
#SleepControl.Recordings	List of possible recording timers

¹: valid values are "sleepcontrol_shutdown.png", "sleepcontrol_hibernate.png", "sleepcontrol_standby.png", "sleepcontrol_restart.png", "sleepcontrol_logoff.png", "sleepcontrol_exit.png", "sleepcontrol_stopplayback.png" and "sleepcontrol_trigger.png"

8. Translation Properties

Property Name	Return value
#SleepControl.TranslationMethod, #SleepControl.TranslationStatus, #SleepControl.TranslationCounter, #SleepControl.TranslationType, #SleepControl.TranslationStart, #SleepControl.TranslationEnd, #SleepControl.TranslationManualTimerCount, #SleepControl.TranslationRecordingTimerCount	Appropriate translations

9. Skinning Options

To add a property to existing skin files, please follow these steps.

- Step 1: open the skin file in a text editor
- Step 2: place the cursor to a valid position in this xml-file
- Step 3: insert the following code for a text based property:

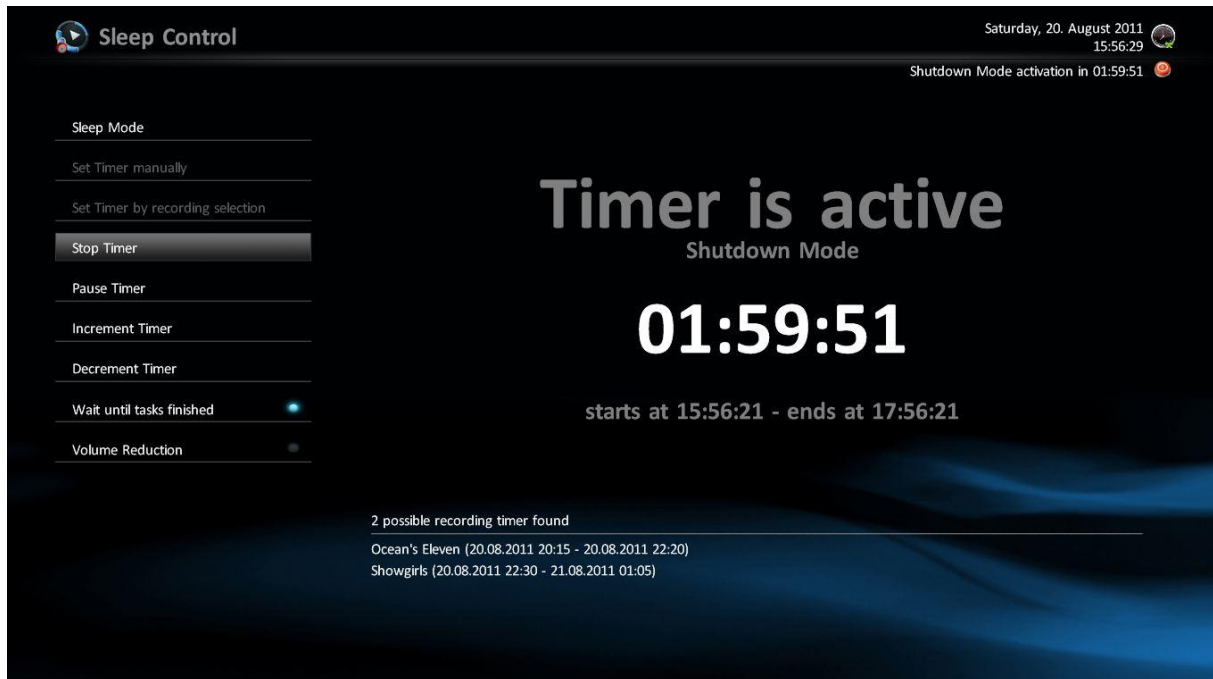
```
<control>
  <description>description</description>
  <type>label</type>
  <id>1</id>
  <posX>100</posX>
  <posY>100</posY>
  <label>label</label>
  <font>font10</font>
</control>
```

or this code for an image based property:

```
<control>
  <description>description</description>
  <type>image</type>
  <id>1</id>
  <posX>100</posX>
  <posY>100</posY>
  <width>10</width>
  <height>10</height>
  <keepaspectratio>yes</keepaspectratio>
  <texture>image</texture>
</control>
```

- Step 4: change all entries in ***bold-italic*** to your desired settings
- Step 5: replace the bold entry **label** or **image** with the desired property (e.g. #SleepControl.Counter, #SleepControl.Image), for more settings the chapter "Properties"
- Step 6: save the skin file and start or restart MediaPortal

10. Screenshots



SleepControl main screen example

11. Version History

- 0.1.0 – Initial Release
- 0.2.0 – Configuration/About dialog added
- 0.3.0 – Bugfixing
- 0.4.0 – Multilanguage Support, Task Control functionality (Recording, Playing Music, Playing Video)
- 0.5.0 – Timer Activation Mode for added
- 0.5.1 – Autostart timer functionality added
- 0.5.2 – Bugfixing for autostart timer configuration
- 0.5.5 – Hibernate/Standby/Shutdown Activation Mode added (merge PowerControl functionalities)
- 0.6.0 – Timer Increment functionality added
- 0.6.1 – Configuration option for menu title
- 0.6.2 – Bugfixing for configuration dialog, dutch translation file
- 0.6.5 – Default Mode configuration setting, Exit Mode functionality added
- 0.6.6 – Alphanumeric activation key functionality added
- 0.6.7 – Code optimization after platform change (Visual Studio/Team Foundation Server 2010)
- 0.7.0 – Counter mode added, Functionality to select timer without selection dialog
- 0.7.1 – Bugfixing for sleep mode configuration dialog and counter values
- 0.7.2 – Functionality to restart autostart timer after standby/hibernate mode added
- 0.7.3 – Bugfixing for task control detection routines, notification dialogs added
- 0.7.4 – Changes for context menus
- 0.7.5 – Trigger functionality added
- 0.8.0 – Decrement and Pause timer functionality added, new task type added
- 0.8.1 – Volume Reduction functionality added
- 0.8.2 – Activation key functionality for restart mode added
- 0.8.5 – Changes to sleep mode confirmation dialog
- 0.8.6 – Bugfixing for autostart functionality
- 0.8.7 – Option for activation dialog and auto choose functionality added
- 0.9.0 – Version/Subsystem control functionalities added, small changes for button handling
- 0.9.1 – Change button definitions
- 0.9.2 – Add functionality to set recording timers
- 0.9.4 – Enhancements to language detection routines to support GUI based language changes
- 0.9.5 – Fine tuning and code hardening
- 0.9.6 – last improvements for MediaPortal v1.2.0
- 1.0.0 – Speak reminder functionality added, final version
- 1.0.1 – Mode “Stop playback” added
- 1.0.2 – Autostart timer functionality enhanced
- 1.0.3 – Bugfixing for possible recording list exceptions, translation properties added
- 1.0.4 – change compatibility flags to support MediaPortal v1.3.0, changes to configuration window
- 1.0.5 – source maintenance, cumulative updates
- 1.1.0 – major source maintenance
- 1.1.1 – improvements for MediaPortal v1.3.0 and skin changes
- 1.2.0 – maintenance release
- 1.2.1 – fix for timer specific issues in case threaded plugin loading is enabled
- 1.2.2 – change compatibility flags to support MediaPortal v1.5.0
- 1.2.3 – refactoring of plugin startup code, code cleanup, internal maintenance/test release
- 1.3.0 – several performance improvements

- 1.3.1 – change compatibility flags to support MediaPortal v1.6.0
- 1.4.0 – rework to support updated plugin framework v1.1.0
- 1.5.0 – change target framework to .NET 4.0, change compatibility flags to support MediaPortal v1.7.0, support for updated plugin framework v1.2.0
- 1.5.1 – fix for key activation handling and timer dialog
- 1.5.2 – change compatibility flags to support MediaPortal v1.8.0
- 1.5.3 – rework update mechanism, changes to support plugin framework 1.3.0
- 1.6.0 – change compatibility flags to support MediaPortal v1.9.0
- 1.6.1 – update player references
- 1.6.2 – change compatibility flags to support MediaPortal v1.10.0
- 1.6.2 – architectural enhancements
- 1.7.0 – rework of configuration dialog
- 1.8.0 – cryptographic routines updated, functionality to share settings and profiles added, support for MediaPortal v1.12.0
- 1.8.1 – rework of message management routines, improvements to sharing functionality, maintenance
- 1.9.0 – support for plugin framework 1.4.0, change compatibility flags to support MediaPortal v1.13.0
- 1.9.1 – maintenance release, change compatibility flags to support MediaPortal v1.14.0

12. Skin Changes

- 0.6.0 – Button-ID for “Wait until task finished” changed from 5 to 6, Button-ID 5 “Increment Timer” added
- 0.7.5 – Image “sleepcontrol_trigger.png” added
- 0.7.5 – Button-ID for “Wait until task finished” changed from 6 to 8, Button-ID for “Increment Timer” changed from 5 to 6, Button-ID 5 “Pause Timer” and ID 7 “Decrement Timer” added
- 0.8.1 – Button-ID 9 “Volume Reduction” added
- 0.9.1 – Rework of Button ID’s (ID 2 “Sleep Mode”, ID 3 “Set Timer manually”, ID 4 “Set Timer by recording selection”, ID 5 “Start/Stop Timer”, ID 6 “Pause Timer”, ID 7 “Increment Timer”, ID 8 “Decrement Timer”, ID 9 “Wait until tasks finished”, ID 10 „Volume Reduction”)
- 1.1.1 – Change button type of ID 9 and 10 to “checkboxbutton”

13. Known Limitations

- none

14. Copyright Information

This Program is free software; you can redistribute it and/or modify it under the terms of the Microsoft Public License (Ms-PL).

This Program is distributed in the hope that it will be useful, but WITHOUT ANY WARRANTY; the software is licensed "as-is." You bear the risk of using it. The contributors give no express warranties, guarantees or conditions. You may have additional consumer rights under your local laws which this license cannot change. To the extent permitted under your local laws, the contributors exclude the implied warranties of merchantability, fitness for a particular purpose and non-infringement.

<http://www.opensource.org/licenses/ms-pl.html>

