

World Places for MediaPortal

Version 1.1.1

Copyright © 2015 - 2016 Alexander Gola (aka Micropolis)

Portions of Map Tile API Copyright © OpenStreetMap



Icon Artwork Copyright © [Icon Shock, Harwen](#)

1. Summary

World Places is a MediaPortal plugin to display webcam information and pictures from around the world.

2. Requirements

This plugin requires MediaPortal v1.6.0 or higher (for more information see the homepage <http://www.team-mediaportal.com>).

3. Installation

To install the World Places plugin, please run the installer "WorldPlaces.mpe1" or, if you want to manually install the plugin, follow the described steps:

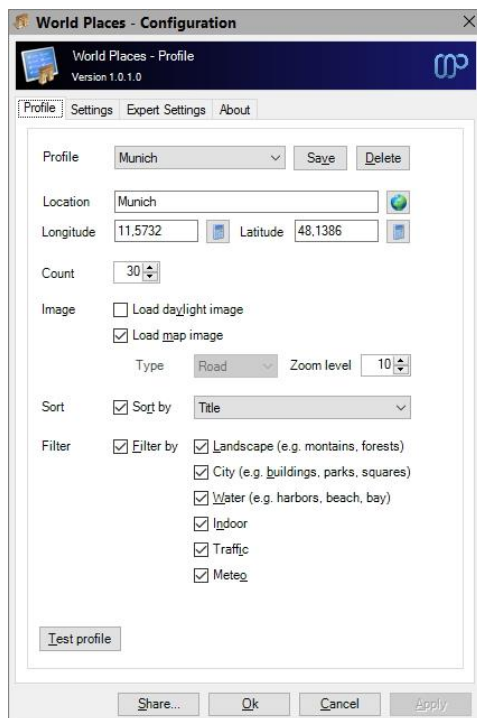
- Step 1: unzip the file "WorldPlaces.zip" to a temporary directory and open this directory
- Step 2: navigate to folder "*WorldPlaces\Release\Plugins\Windows*"
- Step 3: copy all files to the MediaPortal plugin directory, e.g. "*c:\program files\team mediaportal\plugins\windows*"
- Step 4: navigate to folder "*WorldPlaces\Release\Skin\Default*"
- Step 5: copy all files and directories to your MediaPortal skin folder, e.g. "*c:\program data\team mediaportal\mediaportal\skin\default*"
- Step 6: navigate to folder "*WorldPlaces\Release\Skin\Default\Media*"
- Step 7: copy all files and directories to your MediaPortal skin folder, e.g. "*c:\program data\team mediaportal\mediaportal\skin\default\media*"
- Step 8: navigate to folder "*WorldPlaces\Release\Language\WorldPlaces*"
- Step 9: copy all files to your MediaPortal language folder, e.g. "*c:\program data\team mediaportal\mediaportal\language\WorldPlaces*"

4. Configuration

World Places has specific configuration options. To change this, please open your MediaPortal Configuration Utility, go to “Plugins”, select “World Places” in the list of plugins and press button “Config” to change options.

4.1. Profile

Profile: Allows you to select a profile here. Additionally you can save and delete the current profile.



Location: Enter the location name here.

Detect...: If the fields Location empty, this functionality tries to detect your location and geographical coordinates based on your WAN IP address (this can be inaccurate; the result depends on your local network provider). Otherwise the functionality tries to determine the coordinates for entered location name.

Longitude¹, Latitude¹: Specify the appropriate settings here, required to use the location type “Nearby selected location”.

Count: Specify the maximum location entries here.

Load daylight image: If you want to download a daylight image of selected location, please check this option.

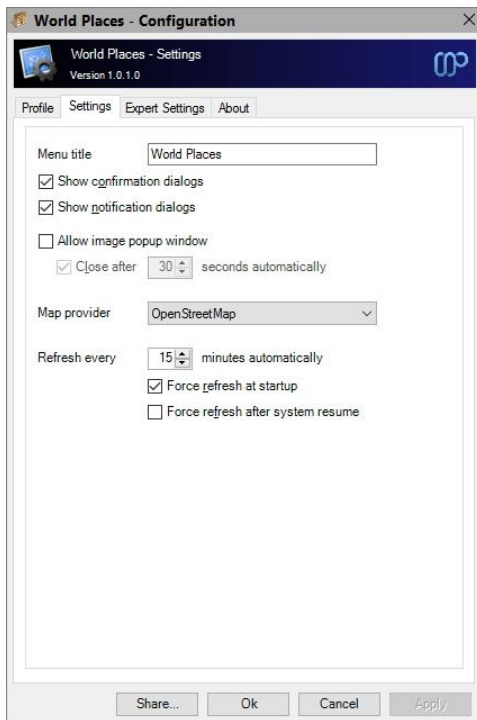
Load map image: In case you want to download a map image of the location, please check this option and specify the zoom level and type (Google only).

Sort: Select your preferred sort order mode here.

Filter: Select your preferred filter options here.

¹ – This plugin use decimal longitude and latitude values only. To calculate this for your appropriate location, please use the calculator button behind the field, a tool or web based calculators (e.g. [TravelMath](#)).

4.2. Settings



Menu title: Enter the menu title here.

Show confirmation dialogs: If this option is turned on, a confirmation dialog opens before starting various actions.

Show notification dialog: If this option is turned on, notification dialog opens in various situations.

Allow image popup window: Please define the behavior of the popup window inclusive the automatic close timeout here.

Map Provider: Select your preferred map provider here.

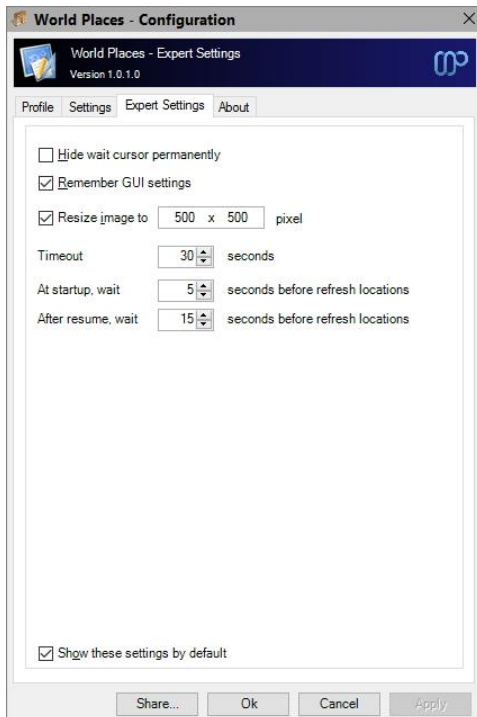
Refresh every: Please define the refresh time here.

Force refresh at startup: Switch this option on to force the refresh of location related information at startup of MediaPortal.

Force refresh after system resume: Switch this option on to force the refresh of location related information after a system resume from standby.

4.3. Expert Settings

The configuration dialog allows you to edit some expert settings. By default, the appropriate options are hidden and will be shown only, if you check the appropriate setting before or when the Shift and the “Config” button are pressed simultaneously.



Hide wait cursor permanently: Allows you to suppress wait cursor display.

Remember GUI settings: Saves the GUI settings (e.g. selected location) before closing MediaPortal.

Resize image: Allows you to resize webcam image to a specific pixel size.

Timeout: Defines the timeout for each internet related operations.

At startup, wait: Count of seconds before refreshing location at startup.

After resume, wait: Count of seconds before refreshing location after resume.

5. Settings and Profile Sharing

By default, all plugin related settings will be saved locally inside the pre-configured client data directory of MediaPortal. In addition to that, WorldPlaces allows sharing settings and profile information among clients. This way you have to define your various plugin settings, credentials, etc. only once and accordingly every client can access this data. Before starting with settings and profiles sharing, please observe the following hints and requirements.

- In principle all local and network storages or cloud services (e.g. OneDrive, Dropbox, SugarSync) can be used for sharing. Before using this feature, possible device or service specific configurations should be checked to prevent access or synchronization problems later.
- The current implementation does not support concurrent read or write operations. Also, the synchronization or latency behavior of a device or service cannot be influenced.
- When using a shared network folder, the device must be available and the operating system must know the credentials to access the device.
- When using an OneDrive folder, an internet connection must be established and the synchronization tool must be installed and running across all devices. Additionally the selected OneDrive folder must be available offline (Windows 8 and below only) or enabled as a sync folder.
- When using a Dropbox folder, an internet connection must be established and the synchronization tool must be installed and running across all devices. Additionally the selected Dropbox folder must be enabled as a selective sync folder.
- To share passwords or keys correctly, all synchronized devices must be in the same network domain or workgroup.

The button “Share” inside the dialog allows the definition of the central configuration storage path. Enter this path information in every client’s setup to ensure, that each clients will use the same settings.

Depending on the selection, the button “Ok” will use the central file storage as defined (when sharing is enabled) or the pre-configured client data directory (when sharing is disabled). The button “Apply” acts in the same way without closing the configuration dialog itself.

6. Window Properties

This plugin offers some properties, see the following table for more information.

Property Name	Return value
#WorldPlaces.Action	Current action (“Idle”, “Receive”)
#WorldPlaces.RefreshDate	Date of latest location refresh
#WorldPlaces.RefreshTime	Time of latest location refresh
#WorldPlaces.RefreshNextDate	Date of next location refresh
#WorldPlaces.RefreshNextTime	Time of next location refresh
#WorldPlaces.Provider	Name of webcam provider
#WorldPlaces.ProviderImage	Image of webcam provider
#WorldPlaces.Location	Name of location
#WorldPlaces.LocationType	Type of selected location
#WorldPlaces.LocationItemCount	Count of location items
#WorldPlaces.LocationItemNumber	Number of location item
#WorldPlaces.LocationItemDate	Date of last item location refresh
#WorldPlaces.LocationItemTime	Time of last item location refresh
#WorldPlaces.LocationItemAgo	Time ago of last item location refresh
#WorldPlaces.LocationItemTitle	Title of location item
#WorldPlaces.LocationItemPlace	Place name of location item
#WorldPlaces.LocationItemCountry	Country name of location item
#WorldPlaces.LocationItemLongitude	Longitude of location item
#WorldPlaces.LocationItemLatitude	Latitude of location item
#WorldPlaces.LocationItemTimezone	Time zone of location item
#WorldPlaces.LocationItemRating	Rating of location item
#WorldPlaces.LocationItemViews	View count of location item
#WorldPlaces.LocationItemCurrentImage	Current image of location

#WorldPlaces.LocationItemDaylightImage	Daylight image of location
#WorldPlaces.LocationItemMapImage	Map image of location
#WorldPlaces.LocationItemOwner	Device owner of location

7. Translation Properties

Property Name	Return value
#WorldPlaces.TranslationAction	Appropriate translations
#WorldPlaces.TranslationLocation	
#WorldPlaces.TranslationCountry	
#WorldPlaces.TranslationLongitude	
#WorldPlaces.TranslationLatitude	
#WorldPlaces.TranslationTimezone	
#WorldPlaces.TranslationRating	
#WorldPlaces.TranslationViews	
#WorldPlaces.TranslationDate	
#WorldPlaces.TranslationTime	
#WorldPlaces.TranslationProvider	

8. Button Functions

Location...: Allows you to select the location.

Type: Allows you to select the location type. Possible options are “Selected location”, “Nearby selected location”, “Popular locations”, “Random locations” and “New locations”:

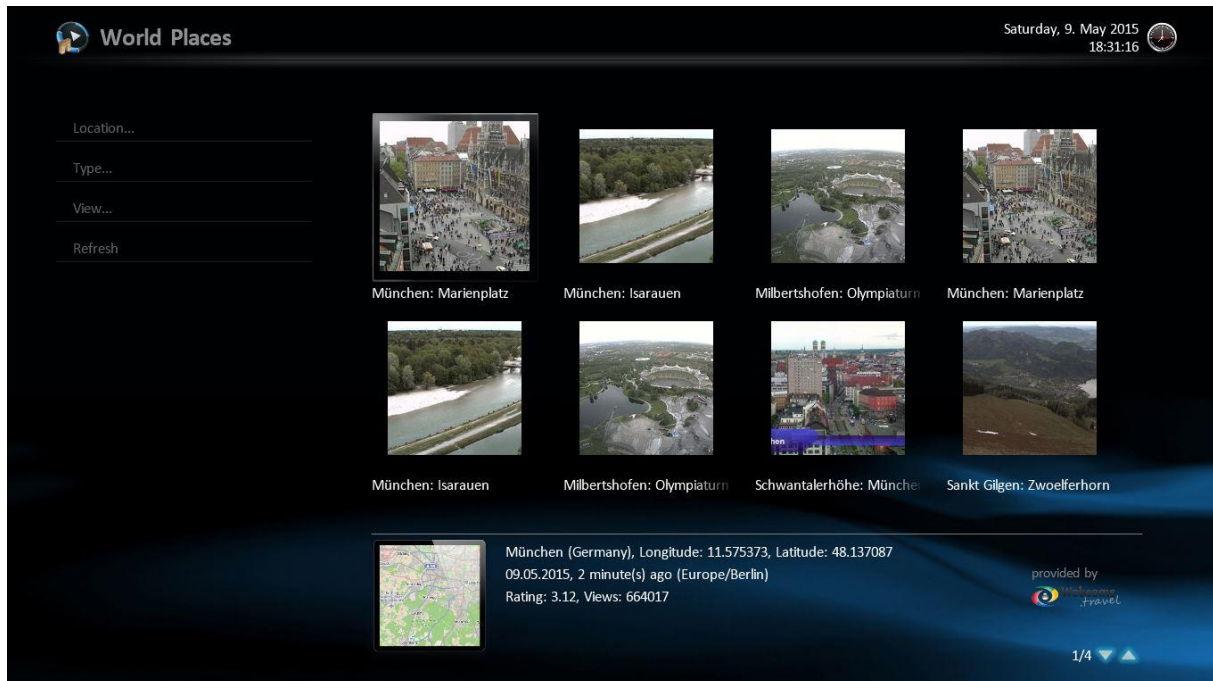
View...: Select the display style here. You can choose between Preview, Thumbnail, Filmstrip and Coverflow.

Refresh: Refresh the location based on your settings.

9. Context Menu Functions

Add location wizard...: Tries to add a new location. The wizard asks for location name and show a search result of possible locations.

10. Screenshots



World Places example

11. Version History

- 0.1.0 – Initial release
- 0.5.0 – First community release
- 0.5.1 – Map tile support incl. specific property added, Filter functionality added, Test profile functionality added, DefaultWide skin files added
- 0.5.2 – Option to download the daylight image added, enhancements to Test profile functionality, internal load balancing feature for OpenStreetMap services added, parser performance improvements, language files updated
- 0.5.3 – Improvements to location detection in configuration dialog, Add location wizard added, bug fixing for random locations, recent viewed locations added, code cleanup
- 0.5.4 – major parser changes, minor bug fixes/improvements
- 0.5.5 – finalization of Test Profile functionality, provider properties and skin image added, language files updated
- 0.5.6 – architectural rework due to introduction of GeoLocation & Map core library, add possibility to use different map tile provider, fix a potential issue with overlay window
- 0.6.0 – first release candidate
- 1.0.0 – cryptographic routines updated, functionality to share settings and profiles added, support for MediaPortal v1.12.0, final release
- 1.0.1 – rework of message management routines, improvements to sharing functionality, maintenance
- 1.1.0 – support for plugin framework v1.4.0, change compatibility flags to support MediaPortal v1.13.0
- 1.1.1 – maintenance release, change compatibility flags to support MediaPortal v1.14.0

12. Skin Changes

- none

13. Copyright Information

This Program is free software; you can redistribute it and/or modify it under the terms of the Microsoft Public License (Ms-PL).

This Program is distributed in the hope that it will be useful, but WITHOUT ANY WARRANTY; the software is licensed "as-is." You bear the risk of using it. The contributors give no express warranties, guarantees or conditions. You may have additional consumer rights under your local laws which this license cannot change. To the extent permitted under your local laws, the contributors exclude the implied warranties of merchantability, fitness for a particular purpose and non-infringement.

<http://www.opensource.org/licenses/ms-pl.html>

